

CROFT MILL



THE LIST
PAGE 15



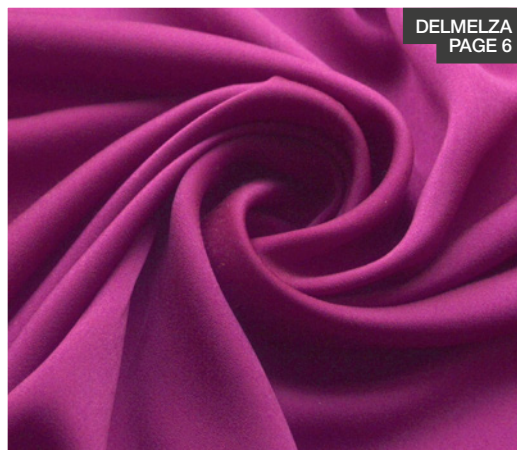
A WALK IN THE PARK
AND LOOKING LOVELY
PAGE 2 & 9



MERCERISED COTTON
PAGE 10



SPRING BROCADE
PAGE 14



DELMELZA
PAGE 6



PRIM
PAGE 11



BONANZA - WATERCOLOUR
PAGE 3



COLD SNAP
PAGE 5



A STEP BACK
PAGE 2

beautiful fabrics delivered to your door

Trumpton...

...I can't just remember all the names of the fire brigade but Cuthbert, Dibble and Grob do come to mind and I'm sure as time goes on I will remember the others. I'm sure you know where this is going...By the time you read this we may all live in a place not dissimilar to Trumpton – the main difference being that whilst one is to do with entertaining children, the new Trumpton may well have everyone fighting each other, but as my grandmother used to say, it takes all sorts.

I wonder what would happen if Donald and Boris were to work together; now there's a thought! I don't think between them they could run Camberwick Green. Anyway, if I don't get on, it will soon be dark and we can't afford to keep the lights on too long, or at least not with the heating as well.



A WALK IN THE PARK



A STEP BACK - MUSTARD



AGATHA



ARKWRIGHTS DREAM

A

A STEP BACK

I have extolled the virtues of linen cloths in the past, and also the shortcomings of linen. Namely that it creases, and it would appear that no amount of extra finishing can resolve the problem. You might have noticed if you watched Michael Portillo coats, or his variously coloured coats – they weren't made of linen, of that I am quite sure. But he did have a striped one that fairly obviously was, because having sat on the train, for whatever period of time he did sit on the train for he came of looking like a wreck. So here we are:

- a) **Grey Check** – Grey suiting with a fairly fine line over check in white and dark brown
- b) **Mustard** – Lovely rich Dijon mustardy colour
- c) **Honey** – Rather fabulous light honey colour
- d) **Beige Fleck** – An oatmeal with lots of tiny white and dark brown flecks in a very light taupe with white flecks
- e) **Black** – Purely black and very elegant cloth
- j) **Red** – This is a mix of viscose with linen, about 50/50ish lightweight shirting/suiting
- j) **Navy** – Lightweight linen shirting/suiting in navy blue

There's not a great deal of any and they have come from a maker of some repute. They are all at least 150cm wide.

REF: **4129** WIDTH: 150cm/59" **£7.50 PER METRE**

A WALK IN THE PARK

150cm wide 97% Cotton, 3% Lycra, lightweight trousering or perhaps, no not perhaps anything, it's trousering in a pale-ish grey with an all over abstract-ish floral design in shades of darker grey, beige, pale blue and white with other hints of those colours along the way, beautifully done and a very striking cloth.

REF: **4149** WIDTH: 150cm/59" **£6.50 PER METRE**

AGATHA

150cm wide fine Polyester printed Crepe De Chine in a quite large floral design in pink and grey on a not quite black background. A soiree sort of cloth.

REF: **4150** WIDTH: 150cm/59" **£4.75 PER METRE**

ARKWRIGHT'S DREAM

Having seen a through re-runs of Open All Hours lately, I can't quite visualise nurse Gladys dressed in this, not diaphanous but exceptionally soft and silky viscose printed in an abstract blurry windows in a skyscraper sort of design with wonderfully vibrant greens, yellows, cerise shapes on a white ground. He would stutter if he saw her in this.

REF: **4112** WIDTH: 142cm/55" **£5.50 PER METRE**

B

BARGAIN BALES

Remnant bundles of fabric, various type and composition, all perfect, no seconds, simply odds and ends that we have put together. In these bundles there is between 6 and 7 pieces of fabric no less than 1 metre and up to 2.5 metres, maybe more. There will be no less than 10m in total. Non-returnable. One per order.

REF: **2128** **£25.00 PER UNIT**

BEYOND OUR KEN

A 145cm wide cotton velvety cloth with a shiny surface. One could almost say that it has been glazed. It's a heck of a finish, and something that I have not seen in my time in this game. This is a surplus from what has been a very expensive short run.

REF: **4128** WIDTH: 145cm/57" **£7.25 PER METRE**

DELIVERY

We aim to despatch your parcel within 3 days of receipt of your order. More details can be found on our website www.croftmill.co.uk



BEYOND THE YELLOW BRICK ROAD

A 140cm wide fine silky polyester dress fabric in black with an all over but not regulated, as it were, tiny floral pattern in white, very pale green, deep turquoise and lilac. The pattern does appear to go somewhat in waves, and looks to me as though it would be good in big skirts.

REF: 4108 WIDTH: 140cm/55" £4.50 PER METRE

BEYOND THE PALE

150cm wide very fine, super fine in fact Italian wool suiting in a very pale grey, fine Prince Of Wales type check with darker grey yarns, darker red yarns and then a very faint over check in what is described on the label as Coral, it doesn't get smarter than this.

REF: 4131 WIDTH: 150cm/59" £18.00 PER METRE

BLUE MOON OF KENTUCKY

145cm wide polyester satin jacket cloth in a lovely navy blue with an all over embossed sort of floral/abstract design. To me, very much an evening wear cloth but I still wear round toed shoes, so who knows?

REF: 4151 WIDTH: 145cm/57" £5.00 PER METRE

BODYCON JERSEY

150cm wide fine stretch polyester jersey in black which folds and falls as graciously as you like or indeed it can be as skin tight as you like. The old ones are the best they say.

REF: 3375 WIDTH: 150cm/59" £5.00 PER METRE

BOHEMIAN

Fair old mix of different coloured dark yarns but overall I suppose the end result is a navy-blue with a fine triple line over check in white. It does have a fancy name on the selvedge but since you won't be wearing it with the selvedge showing I won't mention the name. It is from linen, polyester and wool, we would say in equal measure.

REF: 4120 WIDTH: 158cm/59" £7.50 PER METRE

BONANZA

We recently had a huge delivery of jersey fabrics, of which we are adding just a few to the catalogue – some will be in the next catalogue and some may be on the website in betwixt and between. These are some that we thought you might like first of them are two 100% cotton jerseys, both of them are small blue floral

a) Ecru – Natural looking ground jersey, so a cream colour – on to which has been printed a lovely blue ditsy floral.

REF: 4152A WIDTH: 155cm/61" £6.00 PER METRE

b) Ditsy Do – White cotton, almost an interlock, decent weight cotton jersey, on which is a blue small ditsy floral.

REF: 4152B WIDTH: 155cm/61" £6.00 PER METRE

Here we have three viscose jersey fabrics, all quite different in terms of their weight and pattern.

c) Uber – Ultra lightweight very soft, viscose elastane jersey. I would say, as much as 5% elastane, you could almost call this a four-way stretch on to which is printed a really lovely abstract print in taupe, cream, grey and black. Being ultra-lightweight it will drape extremely well, you'll get lots of drape and there will be no weight to it; so not good for skin tight items as it will show all the lumps and bumps.

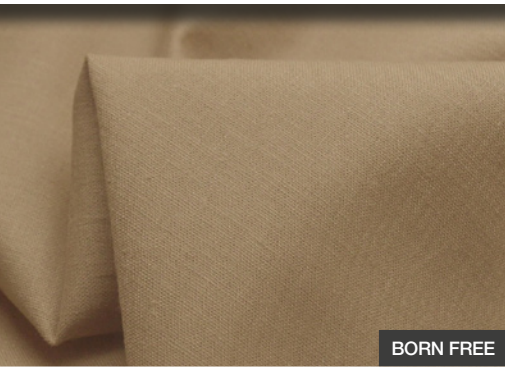
REF: 4152C WIDTH: 146cm/57" £8.50 PER METRE

d) Rauschenberg – Viscose lycra and a lovely quality with a good amount of stretch in it. Approximately 3% lycra and quite a heavy jersey. We are calling it Rauschenberg due to its abstract pattern in black, taupe, cream and beige. A really dramatic and striking print, it will be wonderful made up into a dress or a skirt.

REF: 4152D WIDTH: 150cm/59" £6.75 PER METRE

e) Watercolour – Finally, last but not least, we have a very small amount of this one. It is gorgeously bright watercoloured floral jersey. This is a lightweight viscose jersey with about 5% lycra in it, and will drape beautifully and will look fabulous made into a dress.

REF: 4152E WIDTH: 155cm/61" £11.50 PER METRE



BORN FREE



BOUDOIR



BOYZONE



BOYDS



BRIGHT EYED AND BUSHY TAILED

✿ BORN FREE

A 125cm wide plain 54% linen 43% viscose 3% spandex shirting, ideal for stuff to wear when you are on safari. Cool and allows you to blend into the background, if the background of course is the same colour as this rather nice beige colour.

REF: **4133** WIDTH: 125cm/49" **£7.20 PER METRE**

✿ BOUDOIR

150cm wide or thereabouts, soft, silky, satin, polyester, dare I suggest kimono fabric in black with an all over but reasonably sparse floral design in delicate shades of peach, lemon, grey, with a hint of blue and some pink. It strikes me as being a gentle wrap around sort of cloth for when you flop in front of the telly with a bag of crisps and a bottle of stout.

REF: **4153** WIDTH: 150cm/59" **£6.00 PER METRE**

✿ BOYDS

A 150cm wide 60 square woven cotton shirting in cream, with an all over fairly large bird design in grey, black, dark beige and a hint of taupe here and there. The birds aren't doing anything in particular, but none of them are flying, But they are proper birds.

REF: **4100** WIDTH: 153cm/60" **£8.75 PER METRE**

✿ BOYZONE

150cm wide cotton with some polyester canvas in pale grey, with an all over medium size vehicle design in a wide array of bright colours. All manner of vehicles included in the design, from racing cars to fire engines.

REF: **4103** WIDTH: 15cm/59" **£8.75 PER METRE**

✿ BUNDLES

Mixed – You will get a mix of all sorts of fabrics; wool, fleece, jersey, cotton etc. The value of the fabrics will be between £3.00 and £20 per metre. These are non-returnable.

a) Mixed Small – You will get fabric in pieces from 0.3–0.6 metres in length and you will get around 2.5 metres in total.

REF: BMIXSmall **£4.50 PER UNIT**

b) Mixed Medium – You will get between 6–10 pieces in a mix, 50cm up to 75cm pieces.

REF: BMIX **£6.00 PER UNIT**

c) Mixed Large – You will get fabric in pieces from 0.7–0.9 metres in length and you will get around 4 metres in total.

REF: BMIXLarge **£7.00 PER METRE**

Cotton/Poly/Cotton – There will be a mixture of plain cottons, printed cottons, polycottons and pima cotton lawns, with widths ranging from 44"/112cm to 59"/150cm. These are non-returnable.

a) Cotton Poly/Cotton Small – You will get fabric in pieces from 0.5–0.8 metres in length and you will get around 3 metres in total.

REF: BCS **£8.00 PER UNIT**

b) Cotton Poly/Cotton Large – You will get fabric in pieces from 0.7–0.9 metres in length and you will get around 4 metres in total.

REF: BCL **£12.00 PER UNIT**

REF: **AS STATED** **£ AS STATED PER UNIT**

✿ BRIGHT EYED AND BUSHY TAILED

This is a 140cm wide brushed cotton fabric it comes in a medium sized floral design, the background is a dark blue, I wouldn't call it navy, more of a dark air force blue. A nice blue. The flowers are made up of beige, a rusty peach and a pink and a damson. Very nice fabric for pyjama type bottoms or pyjamas in general and actually you could use it to make lots of things.

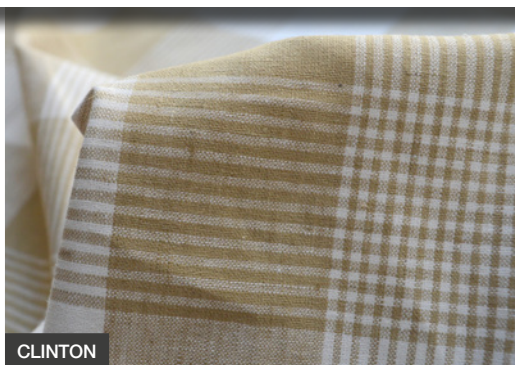
REF: **4154** WIDTH: 140cm/55" **£7.50 PER METRE**

OPENING TIMES

Sadly we are no longer open to the public but we are happy for you to come and see the fabrics, you just need to give us a ring first so we can arrange a time. Orders can also be picked up if preferred. For placing orders by phone we are open between 9.30am - 4.30pm Monday to Friday but you can order online at www.croftmill.co.uk at any time.



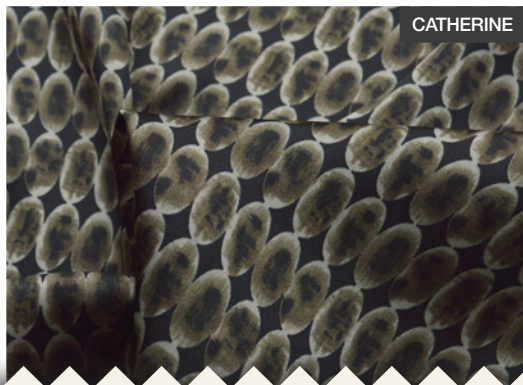
CANDY CREPES - LEFT TO RIGHT - TEAL, APPLE, AQUA, PEACH, CERISE, HEATHER



CLINTON



COLLAPSO



CATHERINE



COLD SNAP



CRANKY

C

CANDY CREPES

There we have our fabulous collection of medium weight polyester Crepe-de-Chine dress fabrics.

- a) Maize** – medium weight polyester crepe, blouse cloth in a beautiful shade of maize.
- b) Purple** – This one is what is to my mind almost a Cadbury purple, though others here think it is a damson.
- c) Teal** – lightweight double crepe fabric, a shade of teal that gives an air of mystery.
- d) Apple** – This one is a shade of apple that suggests in would melt in the mouth.
- e) Heather** – This one is a dusky purple, I could imagine this colour on the moors by Wuthering Heights.
- g) Aqua** – In a beautiful sea type of this colour.
- h) Peach** – double crepe in a delightful peach sorbet colour. Tasty.
- j) Red** – With this cloth you are sure to be the lady in red that is dancing with me!

REF: 1990 WIDTH: 148cm/58" £9.50 PER METRE

CATHERINE

A centimetre wide very delicate silky polyester quite small geometric sort of design, dark greys and blacks and a little bit of green. Stunning polyester cloth from a superb mill.

REF: 4075 WIDTH: 150cm/59" £14.00 PER METRE

CLINTON

A rather muted hoe-down woven cotton shirting in a cotton viscose and linen mix check in off white, beige, khaki 4cm squares with fine stripes of the other colours running through the cloth. A hanglive sort of cloth.

REF: 4124 WIDTH: 139cm/54" £5.00 PER METRE

COLD SNAP

It's early February and we are being warned that the second half of the month will return to much colder weather, good news for some, particularly those of us who like to wear warm clothes made of proper stuff. We've not got poncing about in flimsy, sleeveless polyester vests and to this end we've just taken delivery of a parcel of mainly wool and wool mixture cloths for your delectation. The first are lightly brushed wool Melton's, light weight cloth, almost fleece like in its hand, and oh so cuddly.

- a) Pale Sand** **b) Pale Pink** **c) Fuchsia** **d) Red**
- e) Royal** **f) Black** **g) Pale Grey** **h) Apple Green**

REF: 4172 WIDTH: 148cm/58" £18.00 PER METRE

COLLAPSO

137cm wide beautifully and finely knitted polyester in a sort of honeycombe knit. It has the capacity to crumple in a heap when you let it fall so that if you were either purposely or accidentally to let it slip from your shoulders you could either be chuffed or extremely embarrassed. Beautifully soft and as creaseless as you can get.

REF: 4134 WIDTH: 137cm/54" £4.00 PER METRE

CRANKY

150cm wide fine, cotton, woven, "Scottish" plaid in red, blue, white and yellow on a grey background, a fairly familiar but slightly different colour scheme for a check of this kind.

REF: 4157 WIDTH: 150cm/59" £5.50 PER METRE

SAMPLES

If ordering by post, please send us the reference number and name of the fabric you want plus the following depending on your requirements. Where there are a number of items under a reference please specify your preference; a, b, c, etc.

- 1-5 samples: please post your request and include a SAE
- 6-10 samples £2.50 (non-refundable)
- 11-15 samples £5.00 (non-refundable)

You can also view all our fabrics and order samples at www.croftmill.co.uk

D

DAMSONITE

140cm wide poly wool elastane suiting in a deep damson colour, with a fancy double pinstripe in almost pink and each of the fine narrow stripe has a pinked edge to it. Very closely woven with a beautiful hand.

REF: 4063 WIDTH: 140cm/55" £10.95 PER METRE

DAMSON IN DISTRESS

A 150cm wide woven lightweight polyester lawn shirting in a rather delicious shade of damson, a nice soft finish.

REF: 4126 WIDTH: 150cm/59" £3.50 PER METRE

DEMELZA

A 150cm wide very fine, very soft, floaty, drapery polyester pongee in a rich fuchsia pink. This could float your boat.

REF: 4121 WIDTH: 152cm/60" £4.50 PER METRE

DENIM

Denim? Can we have denim? It is almost impossible at a bargain prices as, costs are escalating. Cotton, the pound, need I go on? Sometimes we can, hence the differences in prices below. These are all top notch. Here we have a selection of denim fabrics, of a good quality and all weights, the details of which are below. The photo runs from top to bottom this list left to right.

Lightweight – 155cm stunning lightweight indigo denim 100% cotton shirting fabric.

REF: 2086D WIDTH: 155cm/61" £10.00 PER METRE

Cowboy – This is 165cm wide indigo cotton denim is incredibly strong. Something tough enough for the hardest cowboys.

REF: 2086J WIDTH: 150cm/59" £10.95 PER METRE

Slub Chambray – 152cm wide superb designer quality denim slub chambray cotton shirting fabric.

REF: 1391 WIDTH: 152cm/60" £5.50 PER METRE

A Grey Day – A superb 13oz, 150cm wide quite stout broken twill weave denim in grey. Which really means it's made up of grey and white yarns woven in such a way as to show each colour on the surface. A lovely cloth and actually, not a bad grey either.

REF: 4130 WIDTH: 150cm/59" £10.00 PER METRE

Inside Out – Superb 11oz stretch beautiful colour of grey denim, 120cm wide. I did think at one time they may have been weaving two of these narrow widths together because somebody didn't want a wider cloth to be cut down the middle but I honestly don't think that that can be the reason. This fabulously woven and finished denim is made up of two pale shades of grey yarn, which you can wear with the darker side out or lighter side with contrasting turn ups or reveries or something of that sort. Made in 95% cotton 4% lycra, it has a lovely soft hand and is well worth a shout.

REF: 4137 WIDTH: 120cm/47" £10.00 PER METRE

Capisce – 150cm wide. Mainly cotton with Polyester, Viscose, Elastane, lightweight denim like trousering in mottled black and grey. It has a fairly soft hand and will drape and this will not behave like a traditional denim where you have to sit down in stages.

REF: 4156 WIDTH: 150cm/59" £6.75 PER METRE

You Rascal You – 137cm wide 98% cotton, 2% lycra, denim like trousering in grey and black, being a denim type it obviously has a cream coloured weft and it has a traditional plain broken twill weave with the addition of fine pinstripes giving it an almost herringbone weave appearance and can actually be an awfully smart cloth or a very casual one as it fits your mood.

REF: 4167 WIDTH: 137cm/53" £7.00 PER METRE

Golden Compass – Superb Gold 11oz 150cm wide heavy cotton denim with just enough stretch to give the cloth a more wearable softness, it comes in a colour which is somewhere between English and French mustards and gold. Quite different.

REF: 1336 WIDTH: 150cm/59" £10.00 PER METRE



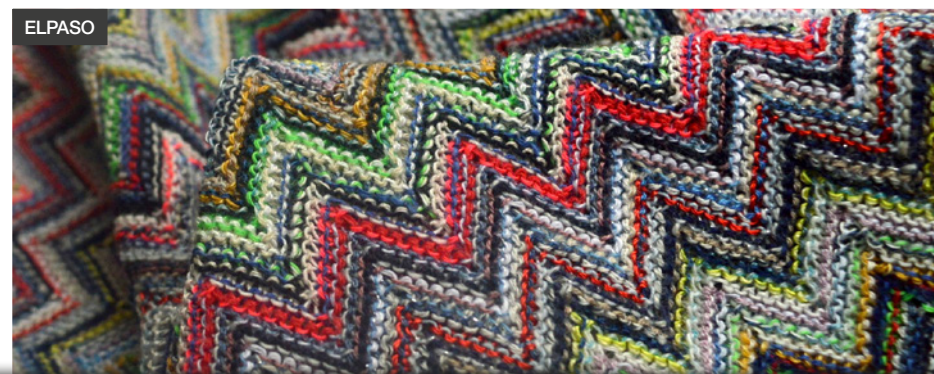
DAMSONITE



DENIM - LEFT TO RIGHT - LIGHTWEIGHT, COWBOY, SLUB CHAMBRAY, A GREY DAY, INSIDE OUT, CAPISCE, YOU RASCAL YOU, GOLDEN COMPASS, BULL DURHAM



DEMELZA



ELPASO

Bull Durham – 60" (152cm) wide 100% cotton unbleached but finished 'bull denim' fabric. A heavy weight twill in other words. Approx 381gsm.

REF: **011** WIDTH: 152cm/60" **£7.50 PER METRE**

DOLLYWOOD

A 146cm wide almost felt like cloth, woven in a conglomeration of fibres including wool, polyester, viscose and acrylic. Its multi-coloured, has umpteen different weaves all in the form of a 3cm square check which has then been brushed. I think it will look best in a sleeveless Gillet type article. But a jacket wouldn't go a miss either.

REF: **4102** WIDTH: 146cm/57" **£19.50 PER METRE**

E

EASIEST WIG

150cm plus wide finely woven viscose shirting in black. Nothing to write home about it as it is, but embroider something on it and you have a winner. Unless of course it's not your football team.

REF: **4158** WIDTH: 150cm/59" **£5.00 PER METRE**

ELPASO

After doing the washing, seeing to the children and then the animals this Mexican lady would go out on to her porch, light a pipe and drape this shawl around her shoulders, the shawl is made from cotton, viscose and silk – mainly cotton quantities unknown – and is knitted in a zig zag design, multi-coloured in pink, blue, yellow, green, black and white with just a hint here and there of silver. A fairly loose and easy draping cloth and if I haven't already said so it's a 130cm wide. Made for Missoni Knitwear. Only a tiny bit of it.

REF: **4136** WIDTH: 130cm/51" **£28.00 PER METRE**

OUR GUARANTEE

As long as it has not been cut we will replace or make a refund for anything not to your liking within 14 days delivery of your fabrics. After that we are reasonable too, so please just call us and we will do what we can.

EN MASSE

148cm wide supremely fine polyester dress cloth in a print which covers every centimetre of the cloth, and might be an abstract jumble. Almost as though you are looking through a tunnel of trees in autumn sunshine, where there are flashes of lightness and patches of darkness and you're overcome by its beauty. So much so, you fail to see the log. Woops.

REF: **4122** WIDTH: 146cm/57" **£5.50 PER METRE**

ENOUGH IS NOT SUFFICIENT

145cm wide white 97% Cotton 3% Elastane Trousering with a very fine, in faint, white fancy woven pinstripe which in itself would be sufficient but no they decided to print on top of it and the print is quite a large floral one in shades of mauve and lilac and turquoise. Not a killer but really good.

REF: **4159** WIDTH: 145cm/57" **£6.00 PER METRE**

F

FAB

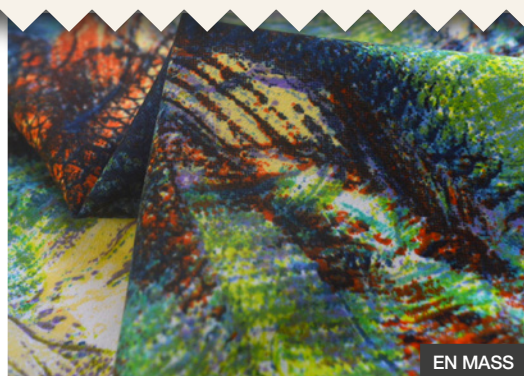
A 140cm wide 69% poly, 29% viscose, 4% elastane twill weave suiting in a weight suitable for hugely swirly skirts, or bell-bottom trousers. And if I haven't already said so, it's dark navy blue.

REF: **4116** WIDTH: 140cm/55" **£7.00 PER METRE**

FIONA

150cm wide fine polyester with 3% lycra in a fairly large but not too large extreme liberty type paisley design of some tropical heritage and lots of lovely tones of, pale green, very pale orange, cream, olive green and hints of tones of all these spread throughout the extremely busy design. A sort of cloth that I think that in paradise Fiona would be only too happy to wear. It will look absolutely magnificent in something long and flowing or even something short and baggy i.e. a blouse.

REF: **4169** WIDTH: 150cm/59" **£9.95 PER METRE**



EN MASS



DOLLYWOOD



ENOUGH IS NOT SUFFICIENT



FIONA

FOREVER YOUNG

There was a time, before she went a little barmy that Bridget Bardot would parade, or indeed promenaded the beaches and the pavement of St Tropez in blue and white gingham shirts and pale blue denimy linen look shorts. I do realise that I want to see what I imagine, but this cloth 146cm wide pale blue linen cloth is made up of darker blue yarns and white. A bit like a chambray, but not a chambray because the yarns in this are a little bit more uneven. But it is still a very fine cloth that would make either shirts or shorts or indeed skirts and trousers. Lovely cloth.

REF: **4118** WIDTH: 146cm/57" **£10.50 PER METRE**

FOR THE ONE AND ONLY KATE MOSS

60in wide black mechanical stretch crepe fabric. We may well get into trouble for using her name, I am not entirely sure. This fabric is overflow fabric made for her collection at Top Shop. These dresses retail at the £150+ mark, not that that bothers us, we just like nice cloth and this is indeed a super cloth, and just like the lady herself, this is bang on trend for all those tight or floaty Marlene 1940's and 1950's style tea dress shapes that are everywhere.

REF: **381B** WIDTH: 152cm/60" **£11.95 PER METRE**

G

GOBSMAKER

150cm wide cream 89% viscose, 11% linen lightweight suiting in a rich cream with an incredible amount of detail in the weave which is showed off by highlights in the yarn. At first I thought this was basically a silk cloth because I have seen cloths like this in the past made of silk, which went into lady's jackets. This is an imposter, but equally beautiful both to look at and to handle.

REF: **4062** WIDTH: 150cm/59" **£10.95 PER METRE**

GRANDMA'S FEATHER BED

140cm wide 68% poly 29% viscose and 3% elastane suiting of incredible softness. It says olive on the ticket but there's a lot more to it than that. The overall effect might be olive but in the very fine weave there's a birdseye check in much lighter green and possibly beige. Can be smart or casual as you wish. Made in Portugal.

REF: **4070** WIDTH: 140cm/55" **£10.95 PER METRE**

GROO WAR

Pure cotton supremely fine lawn in two colours. The cloth is 145cm wide, however the cream has a thin line part way in, making the usable width 131cm – we have altered the price to reflect this.

a) Cream WIDTH: 131cm/51" £4.50 PER METRE
c) Pale Red WIDTH: 145cm/57" £4.75 PER METRE

REF: **1338** WIDTH: AS STATED **£ AS STATED PER METRE**

GRRR

150cm wide fine silky superb polyester elastane blouse cloth with the finest of animal prints you've ever seen in beige and black. Beautiful to look at, delightful to hold. Bit like me. From a mill in Portugal specializing in polyester dress fabric.

REF: **4073** WIDTH: 150cm/59" **£14.00 PER METRE**

H

HARKING BACK

Two very nice cotton poplin fabrics, lovely for making dresses and crafting.

a) Wysteria **b) Jewel**

REF: **4176** WIDTH: 114cm/44" **£6.95 PER METRE**



FOREVER YOUNG



GRANDMAS FEATHER BED



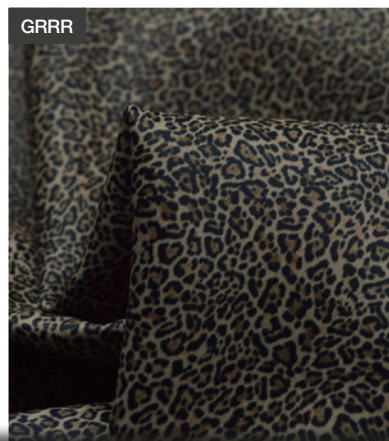
HARKING BACK - JEWEL



LOOKING LOVELY



GOBSMAKER



GRRR



HARKING BACK - WYSTERIA



🌸 HIGH GROVE

150cm wide absolutely delightful tiny grey and white checked shirting in sea island quality cotton. Very special indeed.

REF: 2056 WIDTH: 150cm/59" £4.50 PER METRE

🌸 INDONESIA BATIK

Beautiful Indonesian hand dyed batik cotton for dress, patchwork and quilting. This is the best quality cotton batik for craft and quilting and our collection comes in a beautiful range of colours and designs.

- a) **Flame** – Fiery colours of red, pink, and orange with a swirly design in grey with hints of blue purple and green
- b) **Purple** – Dark purple with blue and green flowers
- c) **Forest Green** – Earthy tones of green with dark teal flowers
- d) **Autumn** – Deep pinks and red, with warm orange leaves
- e) **Sky Blue** – Different shades of blue
- f) **Ocean Blue** – Blues and browns with a white floral design
- g) **Earth** – Greens and browns with a blue floral design
- h) **Lime** – Vivid lime green with a floral design in blues, reds, pinks and purples.

REF: 5023 WIDTH: 114cm/44" £11.95 PER METRE

🌸 INTERLOCK

Superb quality white cotton interlock jersey fabric, made for M&S. It doesn't get much better than this.

REF: 4175 WIDTH: 150cm/59" £5.75 PER METRE

🌸 ITALIAN SHIRTING

A lovely collection of the finest and stunning quality Italian cotton shirting fabrics. Here they are at a special price for the catalogue.

Black and White Gingham – A nice shirting weight.

REF: 5012 WIDTH: 156cm/61"

Mambo Italiano – Delicate Check - An extraordinarily fine cotton.

REF: 2110c WIDTH: 150cm/59"

Atlantic Deep – A super fine lawn fabric.

REF: 3364c WIDTH: 150cm/59"

Mambo Italiano – Pale Blue - A nice cotton poplin fabric.

REF: 2110t WIDTH: 150cm/59"

REF: **AS STATED** WIDTH: AS STATED £5.50 PER METRE

K

🌸 KAYLIE SUNSHINE

147cm wide florally printed cotton, lightly brushed twill dress cloth from Liberty Art Fabrics. Absolutely smothered in the print in which is in mustard, turquoise blue, pink, different shades of brown on a cream background.

REF: 4161 WIDTH: 146cm/58" £16.50 PER METRE

L

🌸 LOOKING LOVELY

This is a 147cm wide 97% cotton, 3% elastane cotton twill printed denim trousering in an absolutely all over floral pattern in black, grey, hints of mauve and perhaps hints of other colours but it is all very dark. Looks quite lovely none the less. A jacket with plain black trousers will be stunning.

REF: 4172 WIDTH: 147cm/58" £6.50 PER METRE



HIGH GROVE



INDONESIA BATIK - AUTUMN



ITALIAN SHIRTINGS



KAYLIE SUNSHINE



INDONESIA BATIK - FLAME



INDONESIA BATIK - FLORAL FOREST



INDONESIA BATIK - LEFT TO RIGHT - SKY BLUE, EARTH, OCEAN BLUE, FLAME, LIME, AUTUMN, FOREST GREEN, PURPLE.



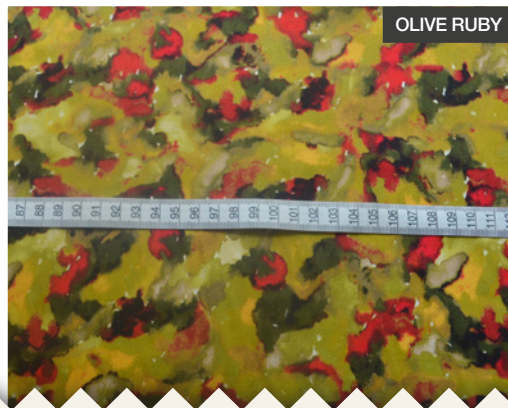
MEREDITH



MIND GAMES



NEARLY ORDINARY



OLIVE RUBY



PRIM

M

MAYPOLE

60" wide fairly heavy, very drapery black polyester crepe, not a cheap and nasty crepe, it's a very expensive one, beautifully made and really will make up beautifully.

REF: **381** WIDTH: 152cm/60" **£9.95 PER METRE**

MERCERISED COTTON JERSEY

The following is a little collection of superfine mercerised cotton jerseys which can't be bettered and come in:

- | | | |
|----------------------------|--------------|--------------|
| a) Fairly bright pea green | b) Navy | d) Black |
| e) Violet | f) Salmon | g) Jade |
| h) Dark Amethyst | i) Pale Pink | j) Cerise |
| k) Dark Taupe | l) Pale Mint | m) Lush Pink |

And all a 150cm wide.

REF: **4050** WIDTH: 150cm/59" **£5.75 PER METRE**

MEREDITH

Here we have a rather lovely fabric, made from 95% linen, 5% polyamide and is 150cm wide. A loosely woven muslin, basically a linen muslin fabric a cream colour, fabulous for making very sloppy, floaty garments – better worn somewhere where it is extremely hot.

REF: **4162** WIDTH: 150cm/59" **£10.95 PER METRE**

MIND GAMES

A 157cm wide at least dark navy 95% cotton 5% lycra denim weight trousering which we must have had in before. Beautifully made, awfully strong, with a reasonably soft hand and a lovely appearance. I rogue yarn 20cm parallel to the selvage could render the width more like 137cm.

REF: **4163** WIDTH: 157cm/61" **£ 5.00 PER METRE**

MIRACLE MAN – DAMSON CORD

150cm wide superb cotton stretch damson needlecord fabric made in Germany. 97% cotton, 3% lycra.

REF: **3371W** WIDTH: 150cm/59" **£7.00 PER METRE**

HOW GOOD?

150cm wide, very fine cotton Needlecord, almost a velvet with a little bit of stretch. I mean how good are you going to feel when you wear this! Just the one colour deepest, darkest navy.

REF: **4171** WIDTH: 150cm/59" **£7.00 PER METRE**

N

NEARLY ORDINARY

140cm wide pale grey 67% polyester 29% viscose 4% elastane suiting with all the hardwearing, easy care properties you would expect with a beautiful hand that you wouldn't. Another one from one of the Portugal's best suiting manufacturers.

REF: **4137** WIDTH: 140cm/55" **£10.95 PER METRE**

DELIVERY CHARGES

Our standard P&P charge is £5.95. This excludes non-UK mainland postcodes which are:

IV; HS; KA27-28; KW; PA20-49; PA60-78; PH17-26; PH30-44; PH49-50; ZE; BT; IM; TR21-25

For these areas the charge depends on weight. Surcharges may apply and vary from £0-£8 on top of the standard charge. Please place your order and we will confirm any extra charges the charge before we ship.

More details can be found on our website www.croftmill.co.uk



PERSEPHONE



PIMA COTTON LAWN - LEFT TO RIGHT - MARY POPPINS
DAVID AUSTIN, SECRET RENDEZVOUS, POPPY



PORCHINI



PULL YOUR SOCKS UP



MERCERISED COTTON JERSEY - LEFT TO RIGHT - LUSH PINK, PALE MINT, DARK TAUPE, CERISE, PALE PINK
DARK AMETHYST, JADE, SALMON, VIOLET, FOREST GREEN, RED, BLACK, PEA GREEN, NAVY

O

OLIVE RUBY

Here we have a lovely cotton stretch 97% cotton 3% sateen dress fabric, 145cm wide fabric that you can use to make lightweight trousers, a lovely dress or jacket. An all-round fabric really, perfect for spring summer or autumn. It comes in lovely colours of olive, pale olive, some lime green with red and beige and dark, dark brown.

REF: **4164** WIDTH: 145cm/57" **£11.75 PER METRE**

P

PERSEPHONE

140cm wide French navy 60% wool, 26% viscose 4% Elastane dress weight cloth with just enough stretch to help the drape but certainly not enough to make tight garments from. It has a very slight sheen and a very soft hand.

REF: **4117** WIDTH: 148cm/58" **£10.00 PER METRE**

PIMA COTTON LAWN

A selection of glorious pima cotton lawns: lovely drape, soft to the touch and a delight to wear. The list below runs in the photo, from top to bottom left to right:

k) Mary Poppins **d)** David Austin **l)** Secret Rendezvous **u)** Poppy

REF: **303** WIDTH: 148cm/58" **£12.95 PER METRE**

Not in the photo, but equally as nice are the following plain pima cottons:

l) Supersonic White WIDTH: 135cm/53" £12.00 PER METRE

m) Supersonic Ivory WIDTH: 135cm/53" £12.00 PER METRE

v) Supersonic Black WIDTH: 135cm/53" £12.00 PER METRE

REF: **303** WIDTH: 135cm/53" **£12.00 PER METRE**

PORCHINI

For reasons best known only to myself, I look at this cloth and I am reminded of perhaps a forest floor where mushrooms grow. Mainly I suppose because the cloth is in umpteen shades of brown from cream through to extremely dark. The design is made up of certainly flower heads, seeds, leaves and in amongst the swirls and folds perhaps there is the odd mushroom. You will need to like brown to like this rather splendid quite sheer polyester chiffon which is 147cm wide.

REF: **4109** WIDTH: 147cm/57" **£4.50 PER METRE**

POSH LININGS

140cm wide soft but substantial superb quality viscose linings either:

a) Silvery grey **b)** Dark beige **c)** Taupe

All with a fine twill weave.

REF: **4088** WIDTH: 140cm/55" **£4.00 PER METRE**

PRIM

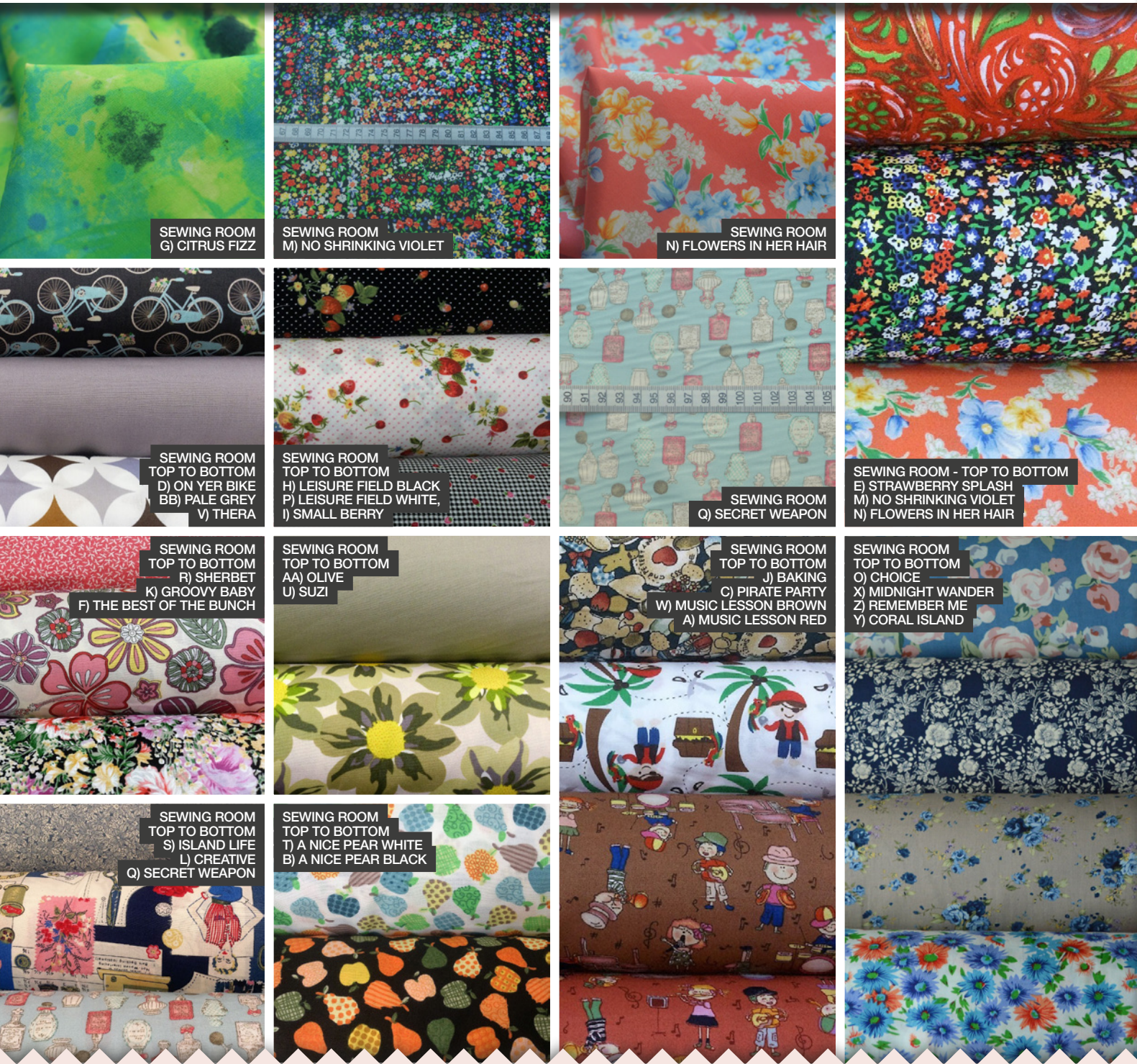
140cm wide very fine viscose 'silk' lawn in what you might think is a fairly drab shade of taupe but with an exuberant fairly large sort of floral spray pattern in mustard, deep turquoise, pale blue, white, purple, lilac and mauve. I did think the flowers might be primulas, but I'm not an expert. A bit like helium, I think it'll float away if you let go of it. Fabulous cloth.

REF: **4138** WIDTH: 140cm/55" **£7.00 PER METRE**

PULL YOUR SOCKS UP

140cm wide 65% cotton 35% silk, pale olive Italian made shirting which has a positive radiance to it.

REF: **4139** WIDTH: 140cm/55" **£10.75 PER METRE**



Sewing Room.

This is a very nice collection of cotton poplin fabrics that are perfect for both dress and craft. They are all 114cm/44" wide apart from those stated below.

- | | | | |
|---------------------------------------|--------------------------------------|---------------------------------|--|
| a) Music Lesson Red | b) A Nice Pear Black | c) Pirate Party | d) On Yer Bike |
| e) Strawberry Splash | f) The Best of the Bunch | g) Citrus Fizz | h) Leisure Field Black |
| i) Small Berry | j) Baking | k) Groovy Baby | l) Creative |
| m) No Shrinking Violet | n) Flowers in her Hair | o) Choice – WIDTH: 150cm | p) Leisure Field White |
| q) Secret Weapon | r) Sherbet | s) Island Life | t) A Nice Pear White |
| u) Suzi | v) Thera | w) Music Lesson Brown | x) Midnight Wander – WIDTH: 150cm |
| y) Coral Island – WIDTH: 150cm | z) Remember Me – WIDTH: 150cm | aa) Pale Olive | bb) Pale Grey |

Please quote double letters when indicated.

REF: 5012

WIDTH: 113cm/44" UNLESS STATED

£6.95 PER METRE



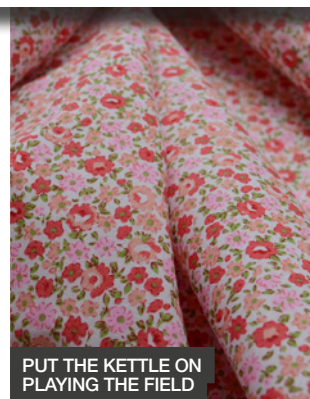
PURPLE HAZE



PUT THE KETTLE ON CHANGING SEASONS



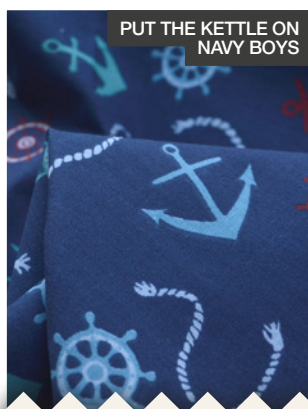
PUT THE KETTLE ON NORTHFIELD



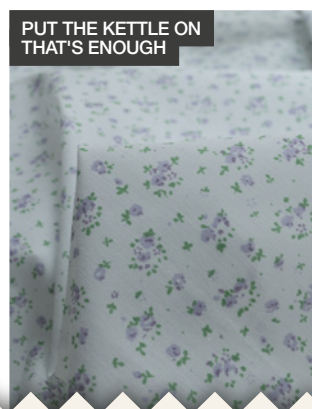
PUT THE KETTLE ON PLAYING THE FIELD



PUT THE KETTLE ON WISHING TIME AWAY



PUT THE KETTLE ON NAVY BOYS



PUT THE KETTLE ON THAT'S ENOUGH



RED FACED



SCHOFIELD - BEIGE



SKY AT NIGHT

🌸 PURPLE HAZE

140cm wide fine cotton twill weave cloth coloured in a floral design all in shades of pink to purple. I'm sure this is a Liberty cloth, and if it isn't it ought to be.

REF: **4141** WIDTH: 140cm/55" **£7.50 PER METRE**

🌸 PUT THE KETTLE ON

Here we have a small selection of 65% Poly, 35% Cotton fabrics, in some lovely prints. They can be used for dress or craft.

- Northfield** – REF: 1709
- Changing Seasons** – REF: 3001
- Playing the Field** – REF: 1079a
- Wishing Time Away** – REF: 3001b
- Navy Boys** – REF: 3006
- That's Enough** – REF: 3010

REF: **AS STATED** WIDTH: 112cm/44" **£3.25 PER METRE**

R

🌸 RED FACED

155cm wide polyester fleece in black, diamond quilted to a fine silky red polyester lining.

REF: **5020** WIDTH: 155cm/61" **£9.50 PER METRE**

S

🌸 SCHOFIELD – BEIGE

140cm wide 67% polyester, 29% viscose, 4% elastane trousering in a lovely soft, rich beige. It doesn't end there however as the cloth has been softly sanded to a point where you feel it might almost slip through your fingers as you fondle it whilst deciding what you're going to do with it. Made in Portugal from a specializing in modern suiting fabrics. Also in black (but not brushed.) (REF: 1800a)

REF: **1800E** WIDTH: 140cm/55" **£10.95 PER METRE**

🌸 SKY AT NIGHT

114cm wide fine cotton poplin in a deep navy blue with an all over, extremely attractive children's print depicting little rockets, planets, lots of dots and crosses. And lovely little people in their pyjamas heading into the great blue yonder. Delightful.

REF: **4105** WIDTH: 112cm/44" **£8.00 PER METRE**

🌸 SILK LIKE STRETCH

Polyester stretch soft peachskin shirting/blouse weight fabric. I guess this has been made to imitate silk, nice floaty blouses and skirts come to mind.

- a) Black b) Silver c) Royal d) Pewter f) Mink**

REF: **3369** WIDTH: 145cm/57" **£6.50 PER METRE**

🌸 SOME DAY I'LL FLY AWAY

150cm wide black soft silky viscose shirting with a beautiful soft hand. Quite fine but with an awful lot of yarn in it.

REF: **4148** WIDTH: 150cm/59" **£5.75 PER METRE**

🌸 SPOT ON

112cm wide viscose lining fabric in either (a) beige or (b) rose pink with a silky soft and smooth hand.

REF: **4061** WIDTH: 112cm/44" **£4.75 PER METRE**

🌸 STRESS RELIEVER

150cm wide fine but quite dense polyester dress fabric in a pale pomegranate. You try and find that colour anywhere. I suppose it veers towards a dark coral, but that doesn't do it any credit; it's a beautiful colour and has a finish not unlike a cupro, which is a much heavier cloth. So it is exceedingly smooth, once everybody's got out of your hair, you'll be able to slip on a kimono made of this and maybe then you'll get your cocoa.

REF: **4143** WIDTH: 150cm/59" **£7.00 PER METRE**

STRETCHING THE IMAGINATION

A 150cm wide polyester lycra fine jersey in a wild vibrant colourful abstract print. Which apart from green, contains all the colours of the rainbow. You will notice me.

REF: **4106** WIDTH: 150cm/59" **£4.50 PER METRE**

STREWGTH

Just when you thought it was safe to go in the water something crops up, til you wonder why you wanted to go in. This 126cm wide cloth is just such a one. First of all you have the width, why on earth the 126cm come from? Number 2 its made from polyester and elastane, with stretch in both warp and weft and for all the world looks and indeed feels like a very expensive cloth. I'm not entirely certain of its absolute intended use but of course anything that's to do with dressing up comes into the frame and its soft enough to make tight fitting stretch trousers.

REF: **4140** WIDTH: 126cm/49" **£5.00 PER METRE**

SHERLOCK

A 150cm wide 70% wool 30% polyester suiting in a very subdued but positive check suiting in two shades grey and some blue sneaking in between the yarns. It does all merge very well and only appears to be a significant check when you get very close to it.

REF: **4136** WIDTH: 150cm/59" **£7.50 PER METRE**

SPRING BROCADE

Sometimes I have to pinch myself when somethings cost so much but then when something is really very special then I can't help myself. I think this will look a million dollars when it is made up. Here we have and stunning Italian dress brocade made from 80% polyester and 20% cotton. It comes in the most beautiful colours of cream, gold and aqua in a lovely large all over floral design. (Another photo on the front cover)

REF: **4169** WIDTH: 145cm/57" **£20.00 PER METRE**

Q

QP

A 147cm wide polyester pseudo quilted cloth in black with a white, quite large floral design. It's fairly clever in that I don't think it has been quilted, I think it has just been woven, looking like it has been quilted. The quilting is in tiny squares. Gillets or jackets will look best made from this.

REF: **4123** WIDTH: 147cm/57" **£10.00 PER METRE**

QUEEN ROSE

It's the time of year when any excuse for a bit of a do is ceased upon with some vigour and maybe we have too bits of do's instead of a big proper do. The cloth I now wish to talk to you about is for a proper do. 150cm wide Polyester, Acetate, ball gown/jacket/waistcoat cloth. My bet is that it was for jackets but it will make anything to do with evening wear. It's fairly stiff, will certainly need dry cleaning and is in black with a fairly large light purple floral design. Absolutely stunning cloth.

REF: **4160** WIDTH: 150cm/59" **£15.00 PER METRE**

T

TAILOR'S LININGS

160cm wide heavy viscose lining cloths, in a brown twill weave with fine vertical stripe relief:

a) Another very dark brown this time with a fancy four stripe leaf at 3cm intervals

b) In an exceedingly dark brown with a fine horizontal pinstripe at 1cm intervals

There is so much yarn in these that they would drape absolutely beautifully even if you decide not to use them as linings.

REF: **CM002** WIDTH: 160cm/62" **£4.50 PER METRE**



QP



QUEENS ROSE



SHERLOCK



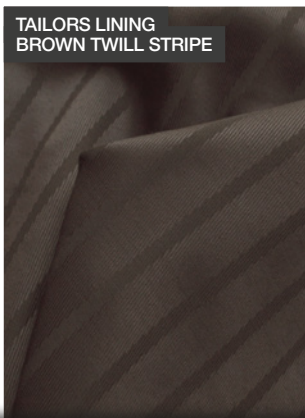
SILK LIKE STRETCH - MINK



SPRING BROCADE



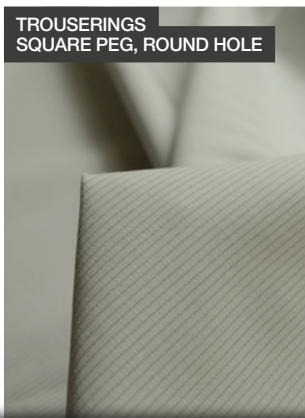
STRESS RELIEVER



TAILORS LINING
BROWN TWILL STRIPE



TRAFFIC



TROUSERINGS
SQUARE PEG, ROUND HOLE



STRETCHING THE IMAGINATION

🌸 THE LIST

Here is a collection of fine cotton lawns, printed in Spain they are of a splendid quality and have lots of quirky prints.

m) Second Impression – A bright multi-coloured abstract print

n) A Wonder – Blue and green mid-sized 'brush stroke' pattern on a pale pink ground

p) Birds of a Feather Nude – Mid-sized bird print on a nude ground

q) Birds of a Feather Navy – Mid-sized bird print on a navy ground

s) Sweet Nothings – White and yellow floral pattern on a pale blue ground

REF: 1996 WIDTH: 142cm/55" £14.95 PER METRE

🌸 THE PERFECT SPY

150cm wide wool with a little stretch suiting in a tiny birdseye design in quite a few shades of grey. A perfect jacket cloth.

REF: 4111 WIDTH: 150cm/59" £7.25 PER METRE

🌸 THE STRANGEST DREAM

Is anybody a fan of the Weavers out there? If not, it doesn't matter... it's just they sang The Strangest Dream song, along with lots of others. I think it was possibly written way way back by maybe Muddy Waters but I might be hopelessly wrong. Whatever. This cloth is 135cm wide, it's a beautiful cotton with cream with the clearest most defined floral print you'll ever clap eyes on. The colours are fairly simple, greens, pale orange, purple, mauve, and turquoise. Chanel handbags have nothing on this, absolutely gorgeous.

REF: 4143 WIDTH: 135cm/54" £7.00 PER METRE

🌸 TO THE BEACH - MIAMI

Beautifully printed dress cloth made in rayon, which as you may know is almost identical to viscose, this is made to imitate the finest cotton lawn. An ivory cloth with once again a fairly large, all over print – floral print – in yellow, green and blue...as well as various shades of those colours. The flowers themselves are varied enough in size and type.

REF: 1624F WIDTH: 140cm/55" £5.50 PER METRE

🌸 TRAFFIC

Cast your mind back, they used to be proper rock bands, one of them had a song in which the Mulberry bush was mentioned, so here we are a generation on and I'm here with it again. A rather wonderful 150cm wide, 70% wool 30% polyester coating in a light-ish Mulberry, a nice soft hand with an air of wispiness to the surface, there's a possibility that you could like this more than I do.

REF: 4144 WIDTH: 156cm/60" £18.00 PER METRE

🌸 TROUSERINGS

Here is a selections of superb quality German Cotton trousering fabrics, the photo runs from the top of this list to the bottom, from left to right:

Pretty Tough - Cream – A 150cm wide fairly substantial Italian made designer cotton with stretch trousering in a very delicate shade of cream.

REF: 1891B WIDTH: 150cm/59" £6.50 PER METRE

The Barn – This 70% cotton /30% linen mix lightweight trousering comes in a pale shade of green with some white slubyness in the weave.

REF: 2169 WIDTH: 150cm/59" £7.20 PER METRE

Square Peg, Round Hole - Saergae – 155cm wide. Very boring desert beige cotton, linen and viscose lightweight suiting which will go with anything.

REF: 2037B WIDTH: 155cm/61" £6.00 PER METRE



SPOT ON - BEIGE



SPOT ON - ROSE PINK



THE LIST - BIRDS OF A FEATHER



THE LIST - LEFT TO RIGHT
P) BIRDS OF A FEATHER NUDE
S) SWEET NOTHINGS, N) A WONDER
M) SECOND IMPRESSIONS
Q) BIRDS OF A FEATHER NAVY



THE STRANGEST DREAM



TO THE BEACH MIAMI



TROUSERINGS - LEFT TO RIGHT - PRETTY TOUGH, THE BARN, SQUARE PEG ROUND HOLE - SAERGAE, ROAD RUNNER, SQUARE PEG ROUND HOLE - FAINT PRAISE, COMING OUT CORAL, UP MY STREET, GURTEEN WEST POINT, GURTEEN - FLATTERY

Road Runner – Plain died cotton trousering in light camel with just enough interest in the weave that hints that a self colour fine.

REF: 2183 WIDTH: 150cm/59" £ PER METRE

Square Peg, Round Hole - Faint Praise – Pure cotton lightweight suiting in pale cream with a very faint, very fragrant pale grey pinstripe.

REF: 2037A WIDTH: 162cm/63" £6.00 PER METRE

Coming Out Coral – Woven cotton chambray shirting which is different from a proper chambray.

REF: 2036 WIDTH: 162cm/62" £7.00 PER METRE

Up My Street – Super fine cotton twill German made trousering in a cracking shade of pale peach or maybe apricot or maybe melon, the base of this cloth is white and has been dyed.

REF: 2171 WIDTH: 150cm/59" £ 6.00 PER METRE

Gurteen West Point – Lightweight trousering in pale grey but not just a straight forward pale grey, there is a hint of air force blue in it hence the reference to west point.

REF: 2034A WIDTH: 160cm/62" £ 6.00 PER METRE

Gurteen - Flattery – 156cm wide lightweight Cotton canvas in a deep lilac colour with some interest in the weft, giving it more of a linen look. Beautiful cloth!

REF: 2034B WIDTH: 156cm/61" £ 6.00 PER METRE

✿ TWIST AND TWIRL

Two fabrics, the same print but in two different colourways. 146cm wide, we have given them this name as the base cloth is a soft plain weave polyester and will drape really nicely.

a) Green – The ground of this cloth is almost a flesh colour, on to which has been printed a very pretty small floral design in dark green, light green, yellow, orange and blue.

b) Lilac – The pattern is printed on a slightly pinker flesh coloured base, onto which the flowers are pale pink, dusky pink, damson, blue and rust. Wonderful gear for packing in a suitcase or traveling as it does not crease and will feel really nice to wear.

REF: 4166 WIDTH: 146cm/57" £ 5.50 PER METRE

✿ TWO FACED

164cm wide rich pale camel polyester fleece bonded to a blanket check fleece in red, blue, cream and brown. Absolute warmth.

REF: 5021 WIDTH: 164cm/64" £7.00 PER METRE

U

✿ UNADULTERATED

What's on the tin, woven into the nature of this cloth are the words pora, lana, bergine. Bergine is a bit of a dim wit such as myself, translate into virgin wool, never sure what the virgin's all about. If he means, unadulterated, not interfered with then this is it, a glorious pale grey sifted with many different shades of grey into the intricate and still very plain weave pattern. Another cloth not to get carried away by.

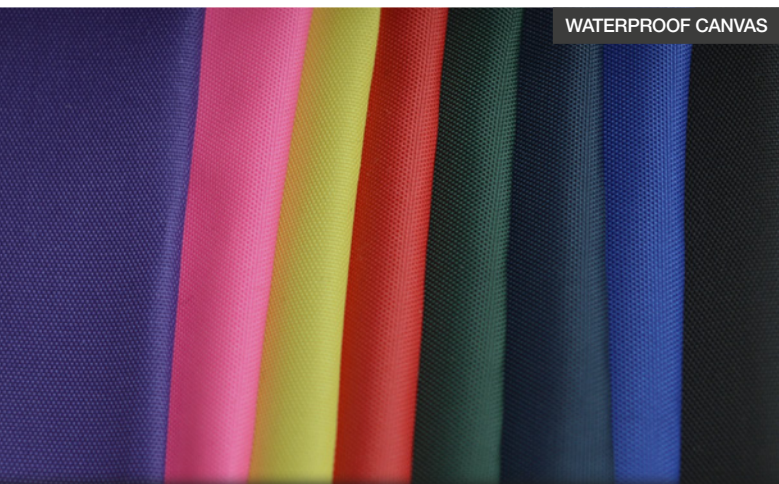
REF: 4145 WIDTH: 145cm/57" £ 25.00 PER METRE



WHATEVER NEXT



VISCOSE JERESEYS - LEFT TO RIGHT - TERROCOTTA, PALE JADE, IVORY, EMERALD, CHOCOLATE, LEMON, PEACH



WATERPROOF CANVAS



VISCOSE JERSEY RICH CREAM

🌸 VISCOSE JERSEYS

Premium quality viscose jersey with between 2-5% lycra. We are sorry we cannot be more accurate about the weights, and we know this can be unhelpful, but for now all we can say is whether they are lightweight/medium weight/heavy. If in doubt please ask for a sample. In the photo the list runs top to bottom left to right:

Terracotta	REF: 1313	WIDTH: 150cm/59"	£6.50 PER METRE LIGHTWEIGHT
Pale Jade	REF: 1523g	WIDTH: 150cm/59"	£5.75 PER METRE LIGHTWEIGHT
Ivory	REF: 1344e	WIDTH: 160cm/60"	£5.00 PER METRE LIGHTWEIGHT
Emerald	REF: 1535a	WIDTH: 150cm/59"	£6.30 PER METRE LIGHTWEIGHT
Chocolate	REF: 1344a	WIDTH: 160cm/62"	£5.00 PER METRE MEDIUM WEIGHT
Lemon	REF: 1955b	WIDTH: 130cm/51"	£5.25 PER METRE LIGHTWEIGHT
Peach	REF: 1523k	WIDTH: 190cm/57"	£5.00 PER METRE LIGHTWEIGHT
Rich Cream	REF: 5014	WIDTH: 172cm/67"	£5.75 PER METRE MEDIUM WEIGHT

REF: **AS STATED** WIDTH: AS STATED **£ AS STATED**

🌸 VLP

A rather splendid 150cm wide very fine viscose lawn in a dusky rose pink. Incredibly soft and it will be a delight to wear.

REF: **4127** WIDTH: 150cm/59" **£ 4.00 PER METRE**

W

🌸 WATERPROOF LIGHTWEIGHT CANVAS FABRICS

Here is range of our lightweight canvas waterproof fabrics in fascinating colours:

- | | | | |
|-----------------------|-----------|-----------|---------|
| a) Fluorescent Yellow | b) Black | c) Royal | d) Navy |
| e) Fluorescent Pink | f) Purple | g) Bottle | h) Red |

REF: **3401** WIDTH: 150cm/59" **£ 9.50 PER METRE**

🌸 WHATEVER NEXT?

A 145cm wide polyester chiffon in black, with tiny all over cream polka dot design; on to which someone has seen fit to embroider scraps of a red, white and navy blue 'tartan' design heavy cloth. I had to take this away and drape it over somebody and I have to say it looks an awful lot better than it sounds.

REF: **4110** WIDTH: 145cm/57" **£ 5.50 PER METRE**



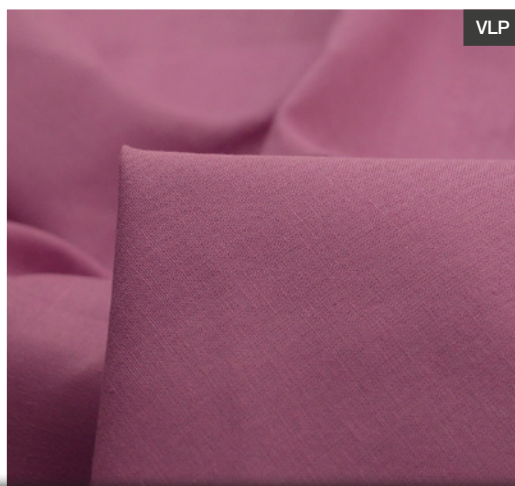
TWO FACED



TWIST AND TWIRL - LILAC



UNADULTERATED



VLP



TWIST AND TWIRL - GREEN

THE BASICS

X1 BLACKOUT CURTAIN LINING

60" (152 cm) wide standard blackout curtain lining: **£6.00 PER METRE**
Blackout Curtain Lining **£4.75 ROLL**

X2 CALICO

Very good quality 60 in (152 cm) wide unbleached medium weight cotton calico. Unfortunately the price of cotton has soared so this is now. **£5.00 PER METRE**
Calico **£4.00 BOLT/ROLL**

X3 CURTAIN LINING

56" (142 cm) wide sol proof cotton satin, curtain lining in ecru. Will probably last as long as your curtains: **£6.95 PER METRE**

X4 ELASTIC

a) 5 mm wide, white: **10p PER METRE**
b) 7 mm wide, white: **15p PER METRE**
c) 7 mm wide, black: **15p PER METRE**
d) 10 mm wide, white: **20p PER METRE**
e) 20 mm (1" wide), white: **26p PER METRE**
f) 30 mm (1.25" wide), white: **30p PER METRE**
g) 30 mm (1.25" wide), black: **33p PER METRE**
h) 40mm wide, white: **40p PER METRE**

X5 INTERFACING - IRON ON

36" wide white iron on interfacing.
a) Medium weight (Vilene type): **£2.00 PER METRE**
b) Light weight (Vilene type): **£1.80 PER METRE**
c) Lightweight Voile Cotton Interfacing, white: **£6.75 PER METRE**
d) Lightweight voile cotton interfacing, black (width 35"/90cm): **£6.75 PER METRE**

X6 INTERFACING - TRADITIONAL

Cotton/Viscose/Horsehair/Polyester substantial woven suiting interfacing 32" (81 cm) wide: **£5.00 PER METRE**

X7 HAND SEWING NEEDLES

Pack of 12 assorted hand sewing needles. **£2.00 PER PACK**

X8 HEMMING WEB

4 metre cards of hemming web: **70p EACH**

X9 DRESS LININGS - SUPERIOR QUALITY

We have good quality polyester linings to match nearly everything:
1) White, **2)** Ivory, **3)** Biscuit, **4)** Dark Beige, **5)** Light Brown, **6)** Dark Chocolate, **7)** Pale Grey, **8)** Grey, **9)** Battleship, **10)** Dark Grey, **11)** Black, **12)** Pale Mint, **13)** Mint, **14)** Apple, **15)** Pale Sage, **16)** Moss, **17)** Bottle Green, **18)** Baby Pink, **19)** Dusty Pink, **20)** Magenta, **21)** Dark Red, **22)** Cerise, **23)** Amethyst, **24)** Dark Amethyst, **25)** Lilac, **26)** Pale Blue, **27)** Turquoise, **28)** Pale Aqua, **29)** Royal Blue, **30)** Navy Blue, **31)** Lemon

If you are not sure which colour you may need we are obviously more than happy to match or contrast the lining, just give us the instruction and we can pick one for you. 60" (152 cm) wide: **£2.75 PER METRE**

X11 ZIPS - SKIRT

7" (18 cm) long good quality skirt zips: **40p EACH**
a) Black **b)** White **c)** Cream **d)** Beige **e)** Ivory
f) Brown **g)** Grey **h)** Pale Pink **i)** Green
j) Navy Blue **k)** Pale Blue **l)** Red **m)** Burgundy
n) Claret **o)** Dark Grey **p)** Jade

X12 ZIPS - DRESS

22" (56 cm) long good quality dress zips: **£1.00 EACH**
a) Black **b)** White **c)** Ivory **d)** Beige
e) Navy **f)** Cream **g)** Grey **h)** Brown

X13 SEWING MACHINE NEEDLES - ASSORTED

Pack of Assorted Sewing Machine Needles: **£2.00 PER PACK**

X14 STITCH RIPPERS

Large Stitch rippers: **£1.20 EACH**

X15 TROUSER HOOK AND BARS

Trouser hooks and bars, 3 pairs per pack:
b) Black **£1.20 PER PACK**

X16 TAPE MEASURES

Best Quality Fiberglass tape measures in metric/imperial one side, imperial only on the other: **£1.50 EACH**

X17 THREAD - REELS

450 metre reels of good quality sewing thread. Lots of colours; we can match it for you if you like. **£1.20 EACH**

X18 THREAD - CONES

5000 metre cones of 120's polyester thread.
a) Black **b)** White **c)** Cream **£3.00 EACH**

X19 HOOK AND LOOP

a) 25 mm wide black touch and close **All £1.00 METRE**

X20 WADDING

a) 54" wide (2 oz in old money) polyester wadding, the quilter's favourite weight it would appear: **£3.50 PER METRE**
b) Cotton Wadding – 100% British Made Cotton Bump, Width: 140cm: **£8.50 PER METRE**

X21 ZIPPADEDODAH

This is a list of zips that have arrived as a job lot, most of them concealed zips and in a fair old variety of colours. All nylon all YKK and they are as follows; Concealed 23cm long (9").

c) White **d)** Cream **e)** Dark Red **f)** Cerise
g) Purple **h)** Coral **j)** Jade

Non-concealed (ie the ordinary) 20 cm (8") long
l) Navy **m)** Dark Navy

Big choice in this one! **All one price 50p each, and that's cheap.**

X22 22" CONCEALED ZIPS

22" long good quality concealed dress zips **£1.75 EACH**
a) Black **b)** Dark Navy **c)** Pale Pink **d)** Beige
f) Puce **g)** Wine **h)** Cerise
i) Light Stone **j)** Pale Blue **k)** Red **l)** Pink
m) Purple **n)** Ivory **o)** Bottle Green

X23 DRESS MAKING ELASTIC

d) Drawstring elastic, white **£1.25 PER METRE**
e) Drawstring elastic, black **£1.25 PER METRE**
f) Round cord elastic, 4mm wide, white **70p PER METRE**

X25

White cotton bunting crafting and sewing tape ¾"(19mm) wide
a) 25p per metre or **b)** £8.00 per 50 meter roll.

X26 PINS

Perfect box of pins for helping to hold you fabric together while you make up your creations. **2.5cm £2.00 PER BOX**

X27 BIAS BINDING

19mm bias binding **70p PER METRE**
a) Cotton – This comes in the following colours: Royal blue, grey, baby pink, yellow, black, dusky pink, turquoise, red, emerald green, lilac, pale blue, ivory, white.
b) Satin – This comes in the following colours: Red, white, pale blue, beige, pink, ivory

X29 BUCKRUM

a) Double Iron On - Double sided iron on heavy stiff white buckrum. 160cm wide **£4.25 PER METRE**
b) Single Iron on - Slightly softer and lighter than the double iron on. 150cm wide **£4.25 PER METRE**



ARKWRIGHTS DREAM
PAGE 2



AGATHA
PAGE 2



SILK LIKE STRETCH - MINK
PAGE 13



QP
PAGE 14



KAYLEY SUNSHINE
PAGE 9



BONANZA
PAGE 3



PERSEPHONE
PAGE 11



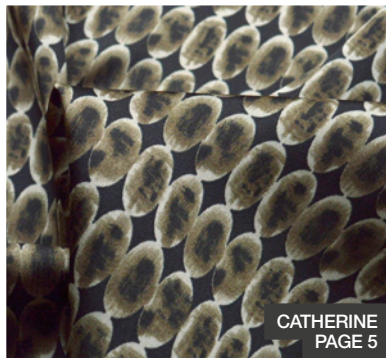
ELPASO
PAGE 7



RED FACED
PAGE 13



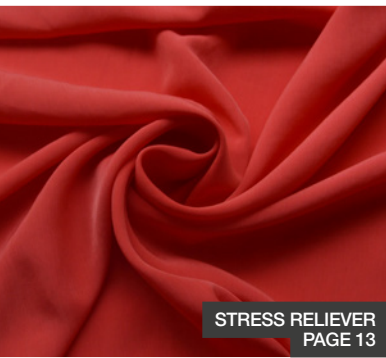
SEWING ROOM
PAGE 12



CATHERINE
PAGE 5



INDONESIAN BATIK
PAGE 9



STRESS RELIEVER
PAGE 13



BOUDOIR
PAGE 4



VISCOSE JERSEYS
PAGE 17



TWIST AND TWIRL - LILAC
PAGE 16



PORCHINI
PAGE 11



TWO FACED
PAGE 16



GROO WAR
PAGE 8



PIMA COTTON LAWN
PAGE 11

Croft Mill UK Ltd Primet Business Centre, Burnley Road, Colne, Lancashire BB8 8DQ

www.croftmill.co.uk | Telephone 01282 859281

[@CroftMillFabric](https://www.facebook.com/Croft-Mill-Fabric) | [facebook/Croft-Mill-Fabric](https://www.facebook.com/Croft-Mill-Fabric)