

CROFT MILL

THE fabric of life #44

www.croftmill.co.uk |  [croftmillfabric](https://www.instagram.com/croftmillfabric) |  [facebook/Croft-Mill-Fabric](https://www.facebook.com/Croft-Mill-Fabric)

Our little bit of ...

fabrics heaven

It has been some time since our last missive so a big 'hello' to you all. I hope you have all been keeping up with your making and creating and keeping those machines well oiled. It has been a busy 12 months for us as we have expanded into new premises, however, and to be fair we managed for far too long in the space we had. Fortunately for us, our neighbours left the building and we quickly dived in and now have the whole floor full of fabrics. How exciting! We also launched our new website at the end of last year where you will find over 2000 fabrics and lots of new haberdashery. And, if that wasn't enough, we have our new look brochure as we now like to call it. It sounds a little better than catalogue doesn't it? It is laid out slightly differently and we sincerely hope you like it as it should make the fabrics you are looking for easier to find. It is only a selection of what we have online but there is something for everyone.

For those of you who know Alan, he's doing well and turned 79 at the beginning of January and is still bobbing in from time to time. He has to keep himself busy so he still chats about the fabrics and brings you some stories! The rest of us just keep working very hard to bring you the best fabrics we can find and everything that goes with that.

Cups of tea at the ready!

Happy browsing

Until the next time,

Caroline and the team at Croft Mill



TRUE ELLA



ITALIAN SHIRTING



FINEST ITALIAN SHIRTING

TRUE ELLA

80% cotton 20% wool brushed cotton shirting fabric in pale blue. This is an excellent version of a Viyella shirting fabric. These can be washed at 30 degrees.

a: Wine b: Green c: Cream d: Pale Blue
e: Dark Royal e: Ivory (sold out) f: Pale pink

REF: 1911V02 APPROX WIDTH 150cm/59" £8.00 PER METRE

ITALIAN SHIRTING

Great Italian style

Superb quality, in fact, the finest Italian cotton lawn shirting fabrics you can buy. From left to right.

a: Tipp b: Big Tuna c: Big Sam d: The kings of Wall Street
e: Jimmy Blue eyes f: 14th Street Steve g: Fingers

REF: 1908J27 APPROX WIDTH 148cm/58" £7.00 PER METRE

TWO STRIPES



AS ABOVE

FINEST ITALIAN SHIRTING

Even greater Italian style

Beautiful combed cotton poplin shirting fabrics from Italy. They have a subtle sateen finish and really are quite luxurious. As good as it gets.

a: Noir b: Mint c: Apple green d: Bottle e: Navy
f: Damson g: Pale cobalt h: Mauve i: Dark Purple j: Rusty
k: Claret l: Red m: Blush Pink

REF: 1801J24 APPROX WIDTH 150cm/59" £6.50 PER METRE

TWO STRIPES

This material was popular with you last year; you seemed to like it's lightness, its natural appearance its crease resistance. We've got a deal on these 2 so they are at a great price. 65% cotton, 35% rayon mix lawn, we have it in 2 brightly printed in a striped designs. A good fabric for warmer weather, we are thinking kaftans It comes in;

a: pink b: orange

REF: 1911V03 WIDTH 148cm/58" £6.25 PER METRE

THIS SEASON'S CROFT MILL

shirting & linen

Once they're gone...
they're gone!



CITY LIFE - NUIT

DOBBY-LICIOUS



CITY LIFE

⌘ Designer fabric made for top end fashion label

Two delicious designer shirting fabrics. Made in 63% acetate 37% cotton, the acetate gives this a subtle lustre in parts, this shirting is extremely expensive to produce and has a multitude of colours. The stripe goes across the weft i.e. from selvage to selvage. If you can handle the stripes it would make into a very impressive shirt dress; it would compete with those found in the most expensive of shops in London, and it comes from Italy. Presently one of the only places weaving cloths of such calibre. Dry clean only.

a: Nuit b: Le Jour

REF: 1912M02 WIDTH 150cm/58" £16.00 PER METRE

SONATA

Two fine twill brushed cotton shirting fabrics. Soft as a babies bottom in two lovely designs.

a: blue plaid b: The flower baby

REF: 1911V04 WIDTH 145cm/57" £10.50 PER METRE



SONATA



SEVEN VEILS

SEVEN VEILS

⌘ Good for shirts & blouses

Here we have a collection of soft woven polyester fabrics in a range of different colours. They have a subtle texture in the weave that gives them a subtle linen look, classy too, good for shirts & blouses and full skirts too. Easy care and doesn't crease;

a: Flame b: Bright Yellow c: Olive d: Pale Blue
e: Bright Emerald Green f: Black g: Pale Pink

REF: 1905J04 WIDTH 150cm/59" £4.75 PER METRE

LOVE LINEN

Gorgeous washed linen shirting fabrics in the 3 most basic colours, not to put them down of course as you can't get any more classic and timeless than this.

a: White b: Black c: Navy

REF: 2001I05 WIDTH 138cm/54" £10.00 PER METRE

LOVE LINEN



FRIENDS



FRIENDS

I'm thinking about friends at the moment, as sadly one of mine passed very recently. No matter how young or old we are, we get so bogged down with the day to day we must never lose sight of how good things are. Here we have 2 fabrics that won't let you down, nothing too fancy, they just do what the tin says. 30% Linen – 70% Rayon they are lovely and soft, the rayon giving the obvious benefit of giving the fabric a little crease resistance. Completely breathable linen mix fabrics.

a: Cath b: Alexandra – the largest personality goes with the bravest print

REF: 2001E26 WIDTH 140cm/55" £10.00 PER METRE

AS ABOVE

Almost identical to the Two Stripes, but at the original price, these fabrics are a little softer and there is a little more texture in the weave, these 65% cotton 35% rayon lawns come in 2 lovely muted colour ways;

a: Floral b: Stripe

REF: 2001V WIDTH: 145cm/57" £9.00 PER METRE

DOBBY-LICIOUS

⌘ Super soft and fine

Supremely fine 100% viscose lawn in a dobby weave with a self-woven pin dot every few mm. This is just delicious, creases only ever so slightly, it's so soft and will make beautiful garments, especially for blouses

REF: 1912M04 145cm/57" £9.00 PER METRE

THIS SEASON'S CROFT MILL

crepe & crepe de chine

Once they're gone... they're gone!

Patterns shown are not in proportion to dress



WILDFLOWERS



WILDFLOWERS



PUTTY



WILDFLOWERS

Two lovely printed polyester Georgette dress fabrics. The perfect fabric for flowing garments, lined skirts and blouses.

a: Blue b: Mustard

REF: 2001E15 WIDTH: 145cm/57" £7.00 PER METRE

PUTTY

Great for more fitting garments

This is a jersey crêpe and a fabulous cloth, it is a heavy jersey made in 92% polyester and 8% elastane. It has four way stretch and on the surface a crepe finish so therefore has a slight texture on which is printed this putty coloured animal inspired print. A very classy looking fabric great for more fitting garments when you also need lots of movement too.

REF: 1910M15 WIDTH: 145cm/57" £12.50 PER METRE

DITTO

We think a garment made in this pleated polyester dress fabric could look like a designer piece. The print is spectacular, combined with the fact it is on a pleated base makes it look expensive. Palazzo wide leg pants or skirt come to mind.

REF: 2001E27 WIDTH: 145cm/57" £7.25 PER METRE

TROPICAL

Ideal for dresses or trousers

Substantial medium weight stretch crêpe dress fabric and not a print for the faint hearted, having said that, if you have the right skin tone for this, this is a fabulous fabric and it will make a fantastic dress or trousers. Composition 98% polyester 2% elastane. Doesn't need lining.

REF: 2001E27 WIDTH: 148cm/58" £6.75 PER METRE

DITTO



TROPICAL

POP OF THE TOPS

This bright fun graphic floral print comes on a lightweight polyester crepe de Chine dress fabric and will be lovely as a dress, top, or loose lightweight pants. The graphic floral print is in cerise and red with cream dots on a black ground.

REF: 1910M06 WIDTH: 150cm/59" £12.00 PER METRE

CAROUSEL

Three fabulous lightweight crepe dress fabrics all slightly different but all equally good.

a: Red – 150cm wide lightweight crêpe with a wonderful soft hand and lovely draping qualities.

b: Olive – 146cm wide lightweight crêpe, again lovely and soft with fantastic draping qualities.

c: Royal – 150cm wide lightweight crêpe, this one has a slight cheesecloth texture to it it's very subtle but it's rather elegant.

REF: 1807C08 WIDTH: AS STATED: £5.00 PER METRE

POP OF THE TOPS

CAROUSEL

AZTEC GEORGETTE

EDEN

EDEN

Lovely weight and drape.

This floral pink satin crepe dress fabric is a lovely mid weight cloth and drapes beautifully. It's has sparse and all over quite bold floral pattern in dense colourful shades of purples, mauve, pink, white, damson, green, blue and lilac.

REF: 1010J01 WIDTH 155cm/60" £7.00 PER METRE

AZTEC GEORGETTE

Two lightweight polyester Georgette dress fabrics in a colourful Aztec print. The design is linear but it's fabulously detailed to the point it looks woven, it really is quite stunning and if used correctly will make a stand out blouse, dress or skirt.

a: Summer – in yellow, red, coral, blue, purple and black.

b: Winter – in blues, greens, browns and black.

REF: 2001E04 WIDTH: 142cm/56" £6.00 PER METRE

THIS SEASON'S CROFT MILL

crepe

Once they're gone...
they're gone!



I DO



STEVE



CANDY CREPES



TRIPLE CREPE



ITALIAN CREPE



LUXURY SATIN BACKED CREPE



SUPERIOR SATIN CREPE

I DO

☞ All have lovely draping qualities.

Four white ivory dress fabrics, perfect for a budget wedding dress or when the bride wants something a little more natural looking. In the age of the £50,000 wedding this may be out of touch but with a little persuasion maybe your daughter/in law can be persuaded to spend that on a house instead.

a: Francesca - 150cm wide ivory polyester lightweight but substantial crepe dress fabric with a definite texture to the surface.

£6.00 PER METRE

b: Daisy - 150cm wide fine white polyester shirting fabric with a linen effect weave, a quite splendid item as you get something very casual and no creasing. **£5.50 PER METRE**

c: Holly - 150cm wide off white smooth crepe dress fabric

£6.00 PER METRE

REF: 1907C03 WIDTH: AS STATED

£ as stated

STEVE

☞ Ideal tunics, blouses and skirts

I was actually thinking of Steve Jobs when I was naming this fabric and there is good reason for it that is because it looks a little bit like buttons. Did you know Steve Jobs had a button phobia and that is why he invented the iPhone? A phone with no buttons. If you have such, this will not be the fabric for you, however, it is a great abstract print in navy and cream, ageless and timeless it is a lightweight polyester satin material, so will be good for Tunics, blouses and skirts.

REF: 1911M03 WIDTH: 150cm/59"

£9.25 PER METRE

ITALIAN CREPE

Italian 63% Polyester, 33% Viscose, 4% Spandex designer crepe dress fabrics in a variety of colours. A medium weight stunning quality dress fabric with some give to make these well fitted dresses you like.

a: Lipstick b: Plum c: Navy d: Black e: Dark Grey
f: Silver Grey g: Damson h: Teal i: Mustard j: Taupe

REF: 1162 WIDTH: 150cm/59"

£ 14.50 PER METRE

CANDY CREPES

Double crepe polyester dress fabrics in various colours. A very popular fabric.

a: Royal b: Red c: Lime d: Deep Damson
e: Grey f: Cerise g: Teal h: Peach
i: Navy j: Aqua k: Olive l: Dusky Pink

REF: 1990

WIDTH: 145cm/57"

£9.50 PER METRE

LUXURY SATIN BACKED CREPE

Superb quality polyester satin backed crepe dress fabric that can be worn either way crepe side or satin side up. A perfect bridal fabric.

a: Red b: Royal c: Jade
d: Teal e: Black f: Navy
g: Dusky Pink h: Silver i: Light Dusky Pink
j: Ivory k: Champagne

REF: 945

WIDTH: 150cm/59"

£12.25 PER METRE

TRIPLE CREPE

150cm wide polyester woven heavy triple crepe dress fabric of the best quality. A wonderful weight and very drapery. Good for fitted garments and doesn't need lining

a: Black 1570b b: White 1570l c: Summer Lemon 1570g
d: Lime 1570f e: Olive 1570j f: Silver Grey 1570i g: Teal 1570d
h: French Navy 1570e i: Fuschia 1570h j: Deepest Purple 1570a

REF: as stated WIDTH: 150cm/50"

£14.75 PER METRE

SUPERIOR SATIN CREPE

A very superior fine polyester 'silk look' luxury satin crepe dress fabric. It just hangs there. Rather splendid.

a: Red 1989c b: Cerise 1989a c: Blush Pink 1989j
d: Camel 1989k e: Ivory 1989d f: Grey 1989h g: Black 1989g
h: Royal 1989a i: Deep Teal 1989i j: Kingfisher Teal 1989f
k: Emerald Green 1989e

REF: 1989 WIDTH: 150cm/59"

£12.00 PER METRE

To see our full range of fabrics and place your order online visit www.croftmill.co.uk or call 01282 859281 | 5

THIS SEASON'S CROFT MILL

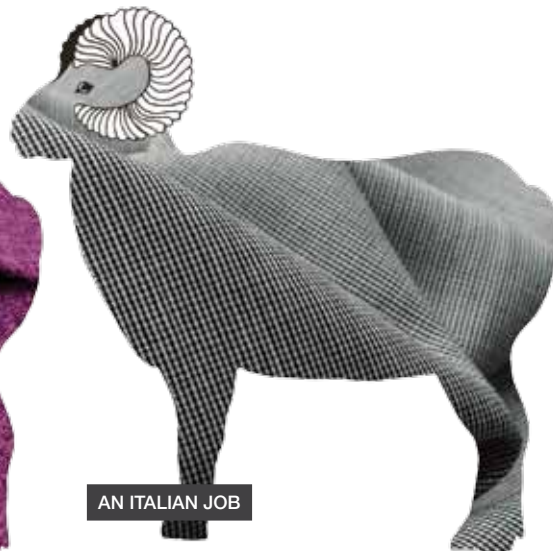
WOOL

Once they're gone...
they're gone!

We have a large collection of wool fabrics in our online store. Most of our wool comes from Britain or Italy. They are of the highest quality and come in all guises.



BOILED WOOL



AN ITALIAN JOB



PERSUASION

BOILED WOOL

☞ Multiple colours available

150cm wide, absolutely glorious 100% boiled wool cloth from one of the finest fabric manufacturers in Europe. At 385g m² this is a heavy boiled wool fabric, perfect for coats, cardigans, jackets and a warm winter skirts. Comes in either:

a: Plum b: Warm red c: Metal grey d: Charcoal
e: Polar blue f: Aqua g: Moss h: Jewel
i: French navy j: Taupe k: Silver grey

REF: 1909H01 WIDTH: 150cm /59" £30.00 PER METRE

AN ITALIAN JOB

Italian worsted wool, light weight suiting in the tiniest hounds tooth type checks. Drapes beautifully with a lovely soft hand and will suit all who wear it.

REF: 1807L03 APPROX WIDTH: 150cm/59" £10.00 PER METRE

PERSUASION

☞ Ideal for jackets

Next to our platinum wool cloth stands this rather splendid soft woven jacketing fabric in navy blue and grey, the design is a tiny porthole like check which would make a stunning jacket. 98% Wool, 2% elastane – drop dead gorgeous.

REF: 1810M31 APPROX WIDTH: 145cm/57" £18.00 PER METRE

ROYAL CONNECTION

☞ With cashmere

95% Wool 5% Cashmere suiting in a prince of wales check – it comes in black, white, grey with the faintest pink fine line all over check – it has a soft brushed finish. Simply divine. Made in England.

REF: 1810M33 APPROX WIDTH: 150cm/59" £24.00 PER METRE

ROYAL CONNECTION

THIS
SEASON'S
HOTTEST
CHECK



WOVEN SELVEDGE EDGE



THE BRIGHT SIDE



BOILED WOOL



PLATINUM



PLATINUM

☞ Great for coats or jackets

Beautiful worsted wool suiting in a very pale air force blue, almost dark silver grey in a heavy twill weave. I don't know if it's still the case but at one time I think this colour is virtually identical to the west point cadet's uniform colour. Great for a trench coat or jacket.

REF: 1810M34 APPROX WIDTH: 150cm/59" £18.00 PER METRE

WOVEN SELVEDGE EDGE

☞ Yorkshire born & bred

Of course all cloths have a selvedge but special ones have, just in from the edge, a little band telling you a little bit about the cloth, in this case we have two wool worsted cloths made in England, which it proudly says along the selvedge. Even better is that they are made down the road in Yorkshire. We have them in;

a: Royal Blue – a tropical weight suiting
b: Black – Perfect for making anything.

REF: 1905A07X APPROX WIDTH: 150cm/59" £18.00 PER METRE

THE BRIGHT SIDE

☞ Black stretch wool

The addition of 5% Lycra helps considerably with the crease resistance. In a fine hopsack weave it is lightweight but with enough body (weight: and if left to its own devices it would just hang there.

REF: 1905M22 APPROX WIDTH: 152cm/60" £24.00 PER METRE

THIS SEASON'S CROFT MILL

Wool & Coating

Once they're gone... they're gone!



RALPH



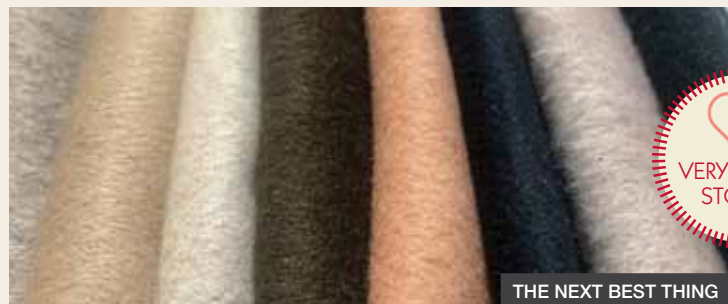
MANUELA TRENCH



COATURE



ZIG & ZAG



THE NEXT BEST THING



THE NEXT BEST THING



RALPH

For the past ½ hour I've been talking to a machine that wasn't switched on, all the lights were indicating that it was working but it wasn't working so it was just me that wasn't working!!

Phew, as all is now well and I stand confronted by a large pile of wool jacketing fabrics, all from Yorkshire's finest and made for a famous American label, here are the first 3. Top to Bottom:

a: Lauren – Wool Tweed check in light cerise, brown, grey and yellow. **£27**

b: The Dales – Wool Tweed check in pink red and mustard. **£27**

c: Pink Herring – Soft 50% wool 25% viscose 25%. **£25**

These could be one to fill your boots with! But yet you won't be able to as there isn't that much – quite stunning.

REF: 1911K01 WIDTH 150cm/59" **£ Price – as stated**

MANUELA TRENCH

Perfect for a trench coat

A fine twill weave wool fabric in Camel. A smart looking fabric.

REF: 1907J16 WIDTH: 150cm/59" **£12.00 PER METRE**

THE NEXT BEST THING

Limited stocks.

You could be fooled into thinking these were 100% wool and although they are not, they are the next best thing. 60% wool/40% polyester melton coating/jacketing fabrics which we have managed to get from a European garment manufacturer. They are gloriously soft and look like a cashmere finish. They really are very good.

We have them in various colours but here we are showing 5 in the photo we also have brown black and navy. Left to right:

a: Putty b: Camel c: Warm Beige d: Chocolate
e: Copper f: Navy g: Blush h: Black

REF: 1910S1 APPROX WIDTH: 152cm/59" **£13.00 PER METRE**

COATURE

Brushed, quite heavy 100% polyester coating in a large black and ivory multi-line check – quite striking and, in its own way I suppose, very glamorous.

REF: 1904B04 APPROX WIDTH: 150cm/59" **£12.00 PER METRE**

WOOL KNIT

Lovely, soft and non itchy

Wool knit cerise fabric for cardigans and jumpers. 70% Wool, 30% Polyamide. Lovely, soft and non itchy. This is a loose knit so it is not opaque but it will make a nice lightweight cover-up or top.

REF: 1810M22 WIDTH: 150cm/59" **£14.00 PER METRE**

ZIG & ZAG

Fabulous for jackets

In my little golfing circle we had a couple of chaps who we christened Zig and Zag because of their method of getting round a golf course, one going one way and the other going the 'ther, and who argued quite vehemently about the best way to do it. Poly wool suiting comes in a quite small but positive zig zag pattern in black and mottled grey – it has a beautifully soft hand and would make a fabulous jacket to go with almost anything.

REF: 1904J14 APPROX WIDTH: 154cm/60" **£9.00 PER METRE**

PALERMO

Soft polyester coating fabrics, each with a slightly different texture in the weave in lovely colours for the spring.

a: ivory b: blue

REF: 1911S15 WIDTH: 150cm/59" **Price £9.00 PER METRE**

THIS SEASON'S CROFT MILL corduroy, velvet



THE FINAL COUNTDOWN



THE FINAL COUNTDOWN

In the days when men wore tights and bloomers they played the ancient game of cord wrangling, and for this they had to wear the finest cloths of their day. Which, over time became one of the best cloths ever made, and that is corduroy. Here we have a superb range of soft European cord fabrics, various widths, some with stretch. They are 100% cotton unless stated otherwise.

- a: Rust - 150cm/59inch - 8 whale needlecord- with 3% Lycra
b: Dark teal - 150cm/59inch- fine needlecord
c: Royal blue - 152cm/59inch- fine needlecord- with 3% Lycra
d: Damson - 152cm/59inch - fine needlecord- with 3% Lycra
e: Red - 152cm/59inch- fine needle cord
f: Sand - 145cm/57inch - extremely fine cotton needlecord
g: Beige - 150cm/59inch- fine needle cord
h: Chartreuse - 145cm/57inch - fine needlecord with 3% Lycra
i: Black- 110cm/43inch - fine needlecord

- j: Brown - 110cm/43inch- fine needlecord
k: Plum - 150cm/59inch - fine needlecord with 3% Lycra
l: Light olive - 110cm/43inch - fine needlecord
m: Teal - 110cm/43inch - chunky cord- -fine needlecord
n: Dark olive - 152cm/59inch- fine needlecord
o: Charcoal - 154cm/60inch - 8 whale cord
REF: 1912E01 APPROX WIDTH AS STATED
110cm/43" - **£7.25 PER METRE**
150cm/59" - **£9.50 PER METRE**

PLUSH - TEAL



PLUSH - BLACK



PASTEL CORD

PLUSH

Great for a shirt or dress

Very soft and malleable corduroy 80% Cotton/20% Polyester jersey fabric. There's not enough stiffness for men's trousers but it would make a great shirt or dress. The ends curl up on this a bit like a jersey fabric does but only a small amount.

a: Black b: Teal

REF: 190512 APPROX WIDTH 155cm/61" **£8.00 PER METRE**

STRETCH CORDUROY - RED

Something for movement and give

I have before me a bonny little parcel of cloth and this one is 145cm wide raspberry colour stretch needlecord made from 57% Polyester, 40% cotton and 3% Lycra. So not a typical cord as we know it but one that is very soft and has movement and give.

REF: 1911S05 APPROX WIDTH 145cm/57" **£9.50 PER METRE**

PASTEL CORD

Beware - you will want to stroke this!

95% Cotton 5% Elastane, very stretchy velvet needlecord fabric. Beware! If you are wearing this, people next to you will want to stroke you. Soft, velvety and scrumptiousness! The stretches one way, selvedge to selvedge, this is the same way as the cords lie (down the warp), so when you pull it, the cords get wider not longer. It has great recovery though and really is a super cord for dresses, shorts or trousers.

a: Lilac b: Beige c: Mint
REF: 2001E33 WIDTH: 145cm/57" **£ 9.00 PER METRE**



STRETCH CORDUROY - RED



LIBERTY - ELEONORA



STRETCH CRUSH VELVET

LIBERTY - ELEONORA

Good for skirts, pinafores and shirts

148cm wide, very fine Liberty rossmore cotton needlecord fabric with a glorious colourful all over floral. Beautiful and soft, as you would expect from this fine maker of fabrics. Good for skirts pinafores, tunics and shirts.

REF: 1910P02 APPROX WIDTH 148cm/59" **£18.00 PER METRE**

STRETCH CRUSH VELVET

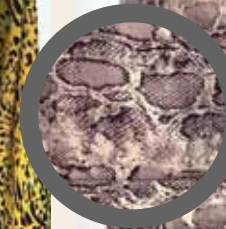
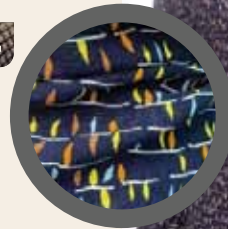
Good quality stretch crush velvet dress fabric. A 4-way stretch knitted velour in 95% Polyester / 5 % Elastane, this is especially good for evening wear. Wash on a cool cycle.

a: Royal b: Rose c: Blush d: Black
REF: 1910C01 APPROX WIDTH 160cm/61" **£7.00 PER METRE**

THIS SEASON'S CROFT MILL

Once they're gone...
they're gone!

viscose, rayon, faux leather



THEY'RE FAKE
BUT NOT A
FORTUNE

LEATHERETTE



FAUX SNAKESKIN



MOTO



WE LOVE
THIS FABRIC

THE WAVE



CHALLIS - DITSY LEAF



CHALLIS - YELLOW TWIST



CHALLIS - SNAKESKIN



PALAZZO



KARLA



VISCOSE PLAINS

LEATHERETTE

This 140 cm wide faux leather dress fabric has a polyester jersey backing which means it has stretch (and good recovery). The jersey back is faced with a natural looking metallic faux leather. The subtle texture of which is absolutely fabulous. A class act in the world of faux leather. Soft and pliable makes it an ideal pleather for making dresses, skirts and jackets and accessories, great for leggings too! Hand wash cool. It comes in;

a: Pewter b: Gold c: Charcoal d: Faux Snakeskin

REF: 1909H22B* APPROX WIDTH 148cm/58" £12.00 PER METRE

FAUX SNAKESKIN

Faux leather snakeskin stretch dress fabric from Germany. Superb quality 'pleather' dress fabric for making skirts, jackets and bags. The print is a sophisticated snakeskin pattern in greys, green, damson/ brown. 94% Polyester / 6% Elastane

Machine Wash 30°C, easy-care cycle - iron reverse side

REF: 1909H22B* APPROX WIDTH 148cm/58" £20.00 PER METRE

MOTO

Lovely soft and pliable black faux leather fabric with a gorgeous natural look textured finish. Good for skirts and jackets and accessories. Made of 50% Polyurethane / 50% this needs to hand washed cool.

REF: 1909H22A* APPROX WIDTH 150cm/59" £14.00 PER METRE

THE WAVE

Soft and drapey printed viscose rayon in a taupe and black geometric design.

REF 2001006 WIDTH 140cm/56" £6.00 PER METRE

KARLA

125cm wide black soft poly/ viscose, slightly satinised, slightly stretchy, lightweight dress fabric with a little bit of weave interest, quite different. This hangs beautifully.

REF: 6284 APPROX WIDTH 125cm/49" £7.00 PER METRE.

PALAZZO

Great Value

This is a high twist finely woven viscose rayon dress fabric with a lovely smooth surface. Superb quality and great value this is one to stand out of the crowd in. and is perfect for loose pants and things that flare?

REF 2001E14 WIDTH 145cm/58" £6.00 PER METRE

CHALLIS

Lovely quality lightweight viscose dress fabrics which are finely woven with a good amount of yarn in them so no lining required and they drape beautifully.

a: Ditsy Leaf b: Yellow Twist c: Snake

REF: 1902H19 APPROX WIDTH 140cm/55" £8.75 PER METRE

VISCOSE PLAINS

140cm wide, very soft and fine 115gsm viscose dress fabrics. A fairly standard fabric but good for shirts and dresses.

a: Mustard b: Red c: French Navy d: Coral
e: Navy f: Cerise g: Black

REF: 1807029 APPROX WIDTH 140cm/55" £5.00 PER METRE



THIS SEASON'S CROFT MILL

denim & lawn

Once they're gone... they're gone!

DENIM - BLACK

DENIM - MOOD INDIGO

DENIM - BEIGE

DENIM - SEEING RED



DENIM – BLACK

160cm wide, seriously heavy black 100% cotton twill trousering. Great for making trousers, jackets & skirts.

REF: 8100 APPROX WIDTH 160cm/62" **£14.00 PER METRE**

DENIM – MOOD INDIGO

Perfect for making dresses, jeans and shirts
140cm wide, 97% cotton, 3% elastane stretch denim, in fairly traditional denim blue in a broken twill weave, just one way stretch and light weight perfect for making dresses, jeans and shirts.

REF: 1805BEG03 APPROX WIDTH 140cm/55" **£8.00 PER METRE**

DENIM – SEEING RED

150 cm wide approximately 8oz, medium weight, 97% Cotton, 3% Lycra red denim.

REF: 1907J22 APPROX WIDTH 150cm/59" **£8.00 PER METRE**

DENIM-BEIGE

140 cm wide Beige denim material in approximately 97% cotton 3% lycra. 10oz possibly 12oz heavy weight denim fabric. Perfect for making denim jackets and skirts.

REF: 1907J21 APPROX WIDTH 140cm/55" **£8.00 PER METRE**

WASHED DENIM 8OZ & 4OZ

WASHED DENIM 8oz & 4oz

Two weights for a wide range of uses.

Wonderfully soft washed cotton denim. We have this in two qualities – 8oz and 4oz. The 8oz is great for making trousers, dresses and jackets, the 4oz for shirts and dresses and some of our customers make culotte pants out of this weight and love them. We have customers who use the 8oz for curtains. They both come in.

a: Dark Blue b: Mid Blue c: Pale blue
8oz - REF: 2086 APPROX WIDTH 150cm/59" **£11.00 PER METRE**

4oz - REF: 1905A09 APPROX WIDTH 145cm/57" **£9.00 PER METRE**

BREXIT

8 colours and weights for a multitude of uses.

Denim fabrics in a range of different colours and weights.

Brexit 1 – Heavyweight - 150cm wide, 100% cotton denim, chunky 14 oz, with a fairly fancy twill weave, without stretch and in traditional denim blue.

Brexit 2 – Devine Lightweight - 150cm wide, lightweight (approx 7.5oz) 98% Cotton / 2% Elastane stretch denim. The perfect denim for a dress, boiler suit or culottes/ trousers.

Brexit 3 - Darkness **£8.50 PER METRE**
150cm wide, 100% cotton denim. Dark blue broken twill weave in a medium weight (approx 8oz).

Brexit 4 – Comfort 150cm wide, 100% cotton (approx 8oz) in fairly traditional Dark Navy blue and this has an element of stretch.

Brexit 5 - Boyfriend - 150cm wide, 100% cotton denim, in lighter blue, broken twill weave with a firm finish. Approx 10oz.

8

7

6

5

4

3

2

1

BREXIT

Brexit 6 – Boris - 150cm wide, very nice 100% cotton denim, approximately 8 oz in weight. This is a lightweight denim woven in a square weave which has the appearance of a chambray. A classy grey. Made up of black blue warp with a cream weft makes it look like a mid-grey with a blue tinge, perfect to wear with black. Easy to sew. Perfect for all garment types.

Brexit 7 – Pack Your Bag - 140cm wide, 100% cotton (approx 12oz) indigo blue denim. This time with a square weave as opposed to a twill weave, which traditional denim ought to have. It comes in a traditional dark denim blue. This is a stiff denim. A good material for making bags and using for crafts especially because of its unusual patterning.

Brexit 8 – Grey Skies - 145cm wide, grey washed soft 100% Cotton denim fabric (Approx 9oz). Malleable and easy to sew in a domestic machine

REF: 1907B01 APPROX WIDTH AS STATED **£ 9.50 PER METRE** (unless stated)

THIS SEASON'S CROFT MILL

denim & lawn

*Once they're gone...
they're gone!*



DENIM - SHIRTING LIGHTWEIGHT

DENIM – SHIRTING LIGHTWEIGHT

✂ A fine, 'fine' denim - great for shirts & shorts
140cm wide, 100% cotton denim shirting of paramount fineness, beautifully made, extremely soft, perfect for shorts, trousers, skirts, shirts and dresses.

REF: 1807P07 APPROX WIDTH 140cm/55" £10.50 PER METRE

DESIGNER DENIM - POLKA

✂ Perfect for dresses, skirts, shirts & jumpsuits.

Lovely and soft polka dot printed denim shirting (approx 4oz) 145cm wide, shirting weight, designer cotton denim. Perfect for making dresses, skirts, shirts & jumpsuits.

a: Polka Light b: Polka Blue c: Polka Navy

REF: 1905A05 APPROX 145cm/57" £9.50 PER METRE



DESIGNER DENIM - POLKA



DENIM - HEAVENLY

DENIM – HEAVENLY

✂ Pretty and delicate patterns

These 4oz denims are perfect for dresses and shirts. Light weight & very pretty patterns, all 100% cotton.

a: Floral Duo-Pale blue b: Floral duo – Dark Blue

c: Lady d: Delicate flower

REF: 1804009 APPROX WIDTH 147cm/57" £9.00 PER METRE

LAWNS

ALMOST NOTHING

✂ Perfect for making shirts, blouses and dresses

100% Cotton Voile as fine as you can get, woven into king and check shirting in a range of different colours. These fabric are perfect for making shirts, blouses and dresses.

a: Turquoise Check b: Purple Check c: Cerise Check

REF: 1905J01 APPROX WIDTH 140cm/55" £7.00 PER METRE



THE GATHERING DAMSON



ALMOST NOTHING



RIVER

THE GATHERING- DAMSON

✂ Why not make a beautiful dress with this gorgeous lawn.

Beautiful cotton lawns, every bit as beautiful as its more famous counterparts but maybe not quite so delicate. This one comes in damson with an all over flowers pattern & would make a gorgeous dress, shirt or skirt.

REF: 1804R09S APPROX WIDTH 140cm/55" £17.00 PER METRE

RIVER

✂ Great value

Beautiful floral cotton lawn fabric. This would make a gorgeous dress, shirt or skirt.

REF: 1908D09 APPROX WIDTH 146cm/58" £8.25 PER METRE



LIBERTY BLUE



SUSSEX

LIBERTY BLUE

✂ A fabric that oozes quality

Beautiful Liberty tana lawn in a luscious blue floral. I know you know how good this stuff is so I'll stop there.

REF: 1912M05 APPROX 140cm/55" £16.00 PER METRE

SUSSEX

✂ Fabulous designs

Everyone tries to copy the Liberty Tana Lawn and this does a fabulous job. Lovely quality finely woven cotton lawn in a selection of delicious prints

a: Valley b: Boston c: Monty d: Lakeside e: Aqua
f: Punch g: Paisley h: Guild

REF: 2001V APPROX WIDTH 140cm/55" £16.00 PER METRE

THIS SEASON'S CROFT MILL

jersey

*Once they're gone...
they're gone!*



IT'S AN ALL OVER THING



NEVER ENOUGH



ROSES

IT'S AN ALL OVER THING

Great quality 58% polyester 40% cotton 2% lycra jersey, knitted in one of Spain's best mills. This is a substantial jacquard jersey and the small scale animal skin design is in black and ivory yarns. It has a small amount of stretch, just enough, but this doesn't have huge amount of give in it. Good for a fitted style garment or cardi.

REF: 1910M11 WIDTH 145cm/57" **£15 PER METRE**

NEVER ENOUGH

We can never get enough of fantastic Ponte Romas like this one. Superb quality, very densely knitted with the faintest delicate ornate print. Lots of stretch both ways with great recovery this ponte is ideal for fitted dress or skirt, it would look beautiful in a jacket too. It won't need lining. 66% viscose, 29% polyamide, 8% lycra.

REF: 1910M09 WIDTH 148cm/58" **£13.25 PER METRE**

ROSES

An elegant terry jersey fabric in 65% polyester, 32% Rayon and 3% lycra. The reasonably large scale rose print in coral and green sits on a lovely grey/taupe ground, a lovely colour to wear. Good for dresses, hoodies and jumpers.

REF: 2001E11 WIDTH 145cm/57" **£7.25 PER METRE**



ZONE



SMOOTH AS



PAJARO



ECHO



MOODY



EXOTIC

ZONE

Finely knitted and lightweight viscose jersey, not the jersey you would use if you wanted something tight-fitting but this is an ideal jersey for T-shirts and tops it has a lovely soft hand and drapes very well.

REF: 2001E12 WIDTH 147cm/58" **£8.75 PER METRE**

PAJARO

Delightful 95% cotton/ 5% elastane jersey with an exotic bird print on a pretty delph blue ground with lots of detailing in the print. Approximately 200 g/m² it is a sturdy jersey with good recovery but not one that drapes.

REF: 2001E18 APPROX WIDTH 145cm /57" **£11.00 PER METRE**

ECHO

Two polyester with 4% Spandex (very stretchy with complete recovery) knitted jerseys in an easy to use small scale abstract design in either

a: Olive

b: Burgundy

REF 20011E03B WIDTH 150cm/58" **£6.00 PER METRE**

SMOOTH AS

140cm wide, pure silk jersey. The cloth just melts in your fingers and collapses in a heap if you let it go, but picks itself up and starts all over again. Absolutely gorgeous.

a. Royal Blue b. Cerise Pink

REF: 1807M07 APPROX WIDTH 140cm/55" **£16.00 PER METRE**

MOODY

Another lovely stretch jersey fabric, perfect for making dresses & skirts. A lightweight 95% viscose 5% Spandex jersey in an all-over splodge pattern. One that can go with so much and one of our favourites.

REF: 1910M16 APPROX WIDTH 158cm/62" **£12.50 PER METRE**

EXOTIC

Lovely French viscose jersey fabric with 5% lycra, perfect for making dresses & skirts it has a reasonably large scale bold and colourful floral print on an emerald green ground. Very Boden!

REF: 1910M19 APPROX WIDTH 150cm/59" **£12.50 PER METRE**

THIS SEASON'S CROFT MILL

jersey

Once they're gone...
they're gone!



COTTON JERSEY



VISCOSE JERSEY



GORGEOUS JERSEY



PONTE ROMA

THE MAKER

☞ For something special

We are lucky to have come across these unusual and very pretty jersey dress panels. Make your own designer looking outfit for pennies. With 5% elastane they are stretchy, team it with a plain jersey to make a drop-dead gorgeous outfit.

a: New England 150cm/59" across x 130cm drop

b: Geo 150cm/59" across x 100cm drop

REF: 1908A17 (£6.00 per panel)

SERENGETI

I've only seen pictures of the Serengeti on television but something tells me the colours in this rather beautiful soft viscose 3% elastane jersey would be quite at home there. A diagonal stripe pattern in various widths, in teal, blue, very pale orange, black and cream and somehow it just has an African vibe to it. The picture shows it waist to bottom selvedge to selvedge.

REF: 1901C05 APPROX WIDTH 150cm/59" £7.00 PER METRE

COTTON JERSEY

So here we have a range of decent if not fairly standard cotton jerseys, we have many other ranges on the website, French terry and premium. This quality is lightweight and good for tops and t-shirts. (Displayed in photo top to bottom)

a: Yellow b: Banana c: Coral d: Pink e: Purple
f: Blue g: Royal h: Red i: Sage j: Brown
k: Chocolate l: Slate Grey

REF: 1810J37 APPROX WIDTH 150/160cm 59/62" £5.50 PER METRE

CLOUD (PICTURE NOT SHOWN)

Densely knitted 95% Viscose 5% Lycra. 4 way stretch knitted jersey that is great for joggers and dresses.

a: Black b: White

REF: 1809P02 APPROX WIDTH 158cm/62" £9.00 PER METRE

GORGEOUS JERSEY

a: White b: Lime c: Damson d: Purple

e: Rust f: Navy g: Black

REF: 2002E01 WIDTH:160cm/62" £7.00 PER METRE

VISCOSE JERSEY

☞ Good jersey for t-shirts, tops, dresses & skirts.

Lightweight viscose jersey fabrics in a range of fabulous colours, a good jersey for t-shirts, tops, dresses & skirts. They all have 5% elastane in them, making them stretchy and very comfortable to wear.

a: Dark Forest b: Bobbies Royal c: Dark Beige d: Turquoise

e: Aqua f: Peach Crush g: Pink Crush h: Bobbies Ivory

REF: 1908A01 APPROX WIDTH 150/160cm 59/62" £7.00 PER METRE

PONTE ROMA (DISPLAYED IN LEFT TO RIGHT)

We have many different qualities of ponte roma on the website but this one is great value and a good quality for making jackets, tunics, trousers and dresses. Dense enough so it doesn't need lining. 150cm wide 70% Viscose, 27% Poly 3% Elastane. It comes in;

a: White b: Black c: Charcoal d: Silver e: Navy f: Red
g: Damson h: Teal i: Purple j: Marine k: Red Kiss

REF: 754 WIDTH APPROX. 150cm/58" £7.50 PER METRE

THIS SEASON'S CROFT MILL

performance

*Once they're gone...
they're gone!*

SPORTS STUFF



WATER RESISTANT CANVAS

Great for garden furniture

PU coated and sol proof polyester canvas which is very strong and water resistant. At 225 g/m² it is great for garden furniture, bags, covers and anywhere you need strong, water repellent fabric. It is soft and malleable to work with and can be used on a regular sewing machine. It comes in:

g: Turquoise c: Grey j: Cherry Red k: Bubblegum Pink
e: Forest Green i: Purple h: Beige f: Lime a: Black

REF: 1780 WIDTH: 145cm/56" £9.25 PER METRE



WATER RESISTANT CANVAS

SPORTS STUFF

Ideal for sports clothing

Water resistant lightweight fabric, soft & malleable, great for lightweight jackets and sports trousers too.

a: Black b: Navy c: Red
REF:1901A01 WIDTH: 154cm/60" £6.00 PER METRE

CHINTZ FINISH

Lightweight polyester water resistant fabric, with a texture in the weave. It has a soft chintz finish on the face.

It is a strong fabric and would be good for a lightweight jacket, for a bag lining or lightweight tote bag. Comes either in:

a: Black b: Very Pale Beige c: Pale Oatmeal d: Taupe
e: Dark Green f: Red g: Pink h: Maroon i: Aqua

REF: 1910AM01 WIDTH: 150cm/59" £5.00 PER METRE



THE END OF OUR STREET



CHINTZ FINISH

THE END OF OUR STREET

Good weight for jackets, bags, aprons, and hats

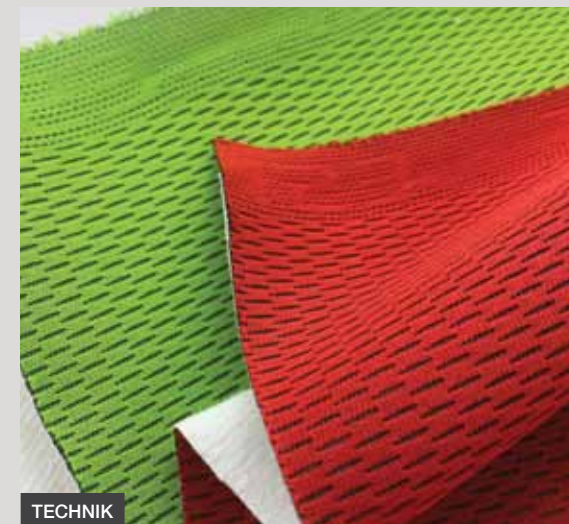
To be more exact 'I'll go to the end of our street', which is (or was) an expression used when you were expressing surprise or astonishment. And so it was, when I came in this morning to see this little batch of cloths we haven't had in a while. Quite substantial but not heavy waxed cotton which is still 'de rigueur' if you want to be really green. They have arrived from a local high-end manufacturer of expensive jackets..

*Please be mindful that by its very nature waxed cotton ages with character and working with wax cotton will mark it. However, this is the nature of the cloth and working with waxed cotton.

If you would like this sending on the roll price is £10. However, if you're happy for it to be folded please proceed as normal. By folding it will come with crease marks on the folds. Comes in:

a: Cumin b: Teal Greeny Blue c: Khaki
d: Black – coated in burgundy on the reverse e: Brown
f: Bright Yellow g: Plain black h: Lilac

REF:1911L01 WIDTH: 150cm/59" £ 7.00 PER METRE



TECHNIK



MICROLIGHT

TECHNIK

A technical fabric with a knitted face on a bonded base cloth, we have been advised this is breathable. It has some mechanical stretch due to the nature of the knitted face. Pretty unusual stuff and we have very limited stocks.

a: Green b: Red
REF:1907J25 WIDTH: 113cm/44" £5.00 PER METRE

MICROLIGHT

Suitable for performance gear

Lightweight, nylon, microlight performance fabrics, to give you an idea how light it is similar to a lining fabric. This comes from a manufacturer using Pertex and this fabric is used in some high-end performance gear. Very water resistant, windproof and breathable.

a: Royal b: Purple c: Sea Green d: Mid Grey e: Lemon
f: Orange g: Red Brick h: Beige

REF: 1807L12 WIDTH: 150cm/59" £5.00 PER METRE

THIS SEASON'S CROFT MILL

lace & brocade

Once they're gone...
they're gone!



AND THEN THERE WERE TWO

How bling is bling! Beautiful floral embroidered lace also manufactured in Italy. This is a very delicate floral lace. There isn't much on each roll so it's a testament to how heavy this cloth is and that in turn is due to the fantastic amount of work that has gone into it. We have this in two colour ways

a: Pale Green b: Pale Blue
Now you can't make your mind up! Can you?

REF: 1905M33 WIDTH: 125cm/49" £ 20.00 PER METRE

A LACE COLLECTION - SPARKLE

134cm wide lace tulle with a scalloped edge on both sides in ivory. The pattern is a fairly large sprawling floral design embroidered in polished yarns with corded edge, some elements are embellished with holographic sequins which have a sparkly element to them which helps them to catch the light. Very pretty indeed.

REF: 1809C14 WIDTH: 132cm/52" £ 22.00 PER METRE

NEMESIS

Two superb designer jacquard dress fabrics, which were manufactured in Italy for a very expensive British label. These fabrics have it all; 75% Polyester 1 18% Cotton 1 4% Elastane, they stretchy, are soft malleable and come in subtle pretty floral design. Good for any garment type. Trousers for me please!

a: Yellow/Pink b: Navy/Black
REF: 2001M01 WIDTH: 130cm/51" £18.00 PER METRE

LIQUID SATIN

Stunning satin fabric with a wonderfully soft and dull finish. With just the right amount of sheen to sit in the very expensive looking park. It has a wonderful "hand", it drapes like a dream and is perfect for bridal, bridesmaid and prom dresses. It makes into the most beautiful blouse.

a: Ivory b: Pale Nude c: Champagne d: Pink
e: Navy f: Emerald g: Black
REF: 1905P25 WIDTH: 150cm/59" £16.00 PER METRE

PLISSÉ

100% viscose plissé teal dress fabric. Simply divine, soft as butter & completely creaseless. Fabulous puff sleeves come to mind. Great for dresses & skirts. Made for a high top British label.

REF: 1908A04 WIDTH: 150cm/59" £10.00 PER METRE

LACE

145cm wide quite traditional soft corded lace. 100% polyester with a scallop edge and beautifully made. Ask us to match lining.

a: Black b: Ivory c: Grey d: Teal e: Dusky Pink
REF: 5376 WIDTH: 145cm/55" £12.95 PER METRE

MOLLY

A fabulous cloqué jacquard floral jacketing material in black.

A heavy cloth made for expensive jackets but could also make a structured skirt and top.

REF: 1904J11 WIDTH: 150cm/59" £7.50 PER METRE

JACQUARD - NAVY

Beautiful Italian jacquard dress fabric in two shades of navy. Very soft and an ideal fabric for jackets, trousers and jackets. An altogether very elegant fabric and absolutely stunning.

REF: 1910M13 WIDTH: 120cm/47" £15.00 PER METRE

SPANISH EYES

140cm wide corded polyester lace with a sheen in the petals of the floral design. There is an inherent stretch in the net. Beautifully soft with quite a bit of weight so it drapes beautifully.

a: Navy b: Blue c: Slate Grey d: Rose Pink e: Dusky Pink
f: Champagne g: Ivory
REF: 1044 WIDTH: 145cm/56" £18.00 PER METRE

PRETTY LACE

An ex designer fabric that was used in dresses. If you combine with self coloured or contrasting lining this will make a very pretty dress indeed. a: Royal Blue b: Black

REF: 1907J09 WIDTH: 112cm/44" £7.50 PER METRE

To see our full range of fabrics and place your order online visit www.croftmill.co.uk or call 01282 859281

CROFT MILL

cotton poplin

COTTON POPLIN PRINTS

All these poplins are beautifully woven and a lovely hand. We have plains to match most of these in our Plain Dyed Cotton Poplin, just ask us to match.

WIDTH 112cm/44" **£ 7.25 PER METRE**



BLOSSOM
A: GREY, B: BLUE, C: YELLOW



BUMBLE
A: NAVY, B: MINT



CAROLINE



PLAIN DYED POPLIN

Plain Dyed Cotton Poplin approx. 121gsm suitable for all purposes.

- a: Emerald Green
- b: Lime Green
- c: Black
- d: Dark Navy
- e: Light Navy
- f: Turquoise
- g: Royal Blue
- h: Sky
- i: Pale Blue
- j: Aqua

- k: Palest Grey
- m: Pale Buttercup
- o: Pale Pink
- q: Iris
- s: Claret
- u: Palma Violet
- l: Cream
- n: Bright Yellow
- p: Mid Pink
- r: Purple
- t: Red

REF: 86 WIDTH 114cm/45"
£5.70 PER METRE



CHICKENS
A: BEIGE, B: MUSTARD
C: DUCK EGG, D: BLUE



HAKKA
A: BLACK, B: ROYAL,
C: RED, D: WHITE



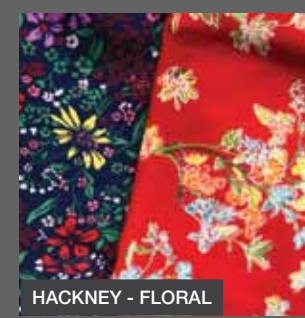
LEOPARD
A: ARABIAN, B: PERSIAN



COUNTRY GARDEN
A: PINK, B: CORAL
C: NAVY



PALM BEACH
A: NAVY, B: BLACK



HACKNEY - FLORAL

HACKNEY - FLORAL

Wider, soft, 100% cotton poplin fabrics, perfect for shirts, dresses or crafts

- a: Navy Blue – with an all over floral sprig like design - **£8.00 PER METRE**
- b: Vibrant Red - with floral bunches design - **£6.00 PER METRE**



PIRATE PARTY
A: NAVY, B: GREY
C: PINK, D: TURQUOISE



RO BOTS



STRIPE
A: PINK, B: MULTI
C: GREEN



SUMMER MEADOW
A: PURPLE, B: PINK,
C: I LIKE THAT



VINTAGE
A: MUSTARD, B: BLUE



TRAVIS & FAITHFUL

TRAVIS & FAITHFULL

Good quality 100% Cotton poplin dress fabrics

- TRAVIS** - a: Blue b: Pink

FAITHFULL - c: Black

WIDTH: 146cm/55" **£8.25 PER METRE**



JOHN LOUDEN - PIXIE

JOHN LOUDEN - PIXIE

Lovely soft cotton poplin dressmaking and craft fabrics in a beautiful palette of colours.

- a: Mint b: Pink
- c: Grey

£11.95 PER METRE

poly cotton



POLY COTTON PRINTS

Woven polyester/cotton for blouses, dresses, nightwear and crafts. Cotton content varies from 20% to 35%. More details online.

WIDTH: 112cm/ 44"

£3.25 PER METRE



5 HOLE BRODERIE ANGLAISE

A nice quality 5 hole Broderie Anglaise fabric in either cream or white. 65% poly, 35% cotton.

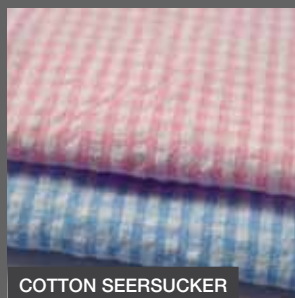
a: White - 5 hole

b: Cream - 5 hole

REF: 15 WIDTH: 112cm/44"

£4.95 PER METRE

£3.75 PER METRE (30M) ROLL



COTTON SEERSUCKER

Cotton seersucker fabric.

a: Pink b: Blue

REF: 97 WIDTH: 58"/148 cm

£5.75 PER METRE

£4.25 PER METRE (30M) ROLL



WADDING

X20 WADDING

a: 54" wide (2 oz in old money) polyester wadding,

the quilter's favourite weight it would appear: **£3.50** PER METRE

B: Cotton Wadding - 100% British Made Cotton Bump,

WIDTH: 140cm: **£8.50** PER METRE



INTERFACING

X5 INTERFACING - IRON ON

36" wide white iron on interfacing.

a: Medium weight (Vilene type: **£2.00** PER METRE

b: Light weight (Vilene type: **£1.80** PER METRE

c: Lightweight Voile Cotton Interfacing, white: **£6.75** PER METRE

d: Lightweight voile cotton interfacing, black (width 35"/90cm): **£6.75** PER METRE



X6 INTERFACING - TRADITIONAL

A mix of cotton/viscose/horsehair/polyester substantial woven traditional interfacing 32" (81 cm) wide: **£5.00** PER METRE



1/4" GINGHAM

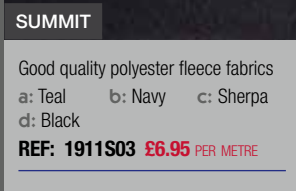
¼ inch corded edged gingham fabric in all the popular colours: 80% poly, 20% cotton, 45" wide.

a: Black b: Yellow c: Red d: Green e: Pink f: Pale Blue h: Royal Blue h: Lilac

REF: 49 WIDTH: 45"/114cm

£3.50 PER METRE

£2.75 PER METRE (30M) ROLL



SUMMIT

Good quality polyester fleece fabrics

a: Teal b: Navy c: Sherpa

d: Black

REF: 1911S03 **£6.95** PER METRE



PLAIN DYED POLY COTTON

Lovely quality 65% poly 35% cotton dress and craft fabric.

a: Black

c: Silver Marl

e: Navy

b: Dark Marl

d: Pale Blue

f: Royal

g: Mint i: Sage Green k: Red

REF: CM1530 WIDTH: 45"/115cm

£3.95 PER METRE

h: Emerald j: Yellow l: Pale Pink



SMILEY FACE



PUT THE KETTLE ON



PAISLEY LININGS

Here we have a fabulous collection of our new Paisley Changeant linings in 8 colours!

a) Blue b) Purple c) Gold
d) Black e) Rust f) Grey
g) Slate h) Champagne Pink
i) Red j) Mustard

REF: 990 WIDTH: 145cm/58" **£5.25** PER METRE

£4.50 PER METRE (25m) roll

canvas



WINCEYETTE

Winceyette flannel which is perfect for pyjamas, hot water bottle covers and crafts.

a: Pretty Little Doty

b: Boys Sleep Over

c: My Boy Would Love This

WIDTH: 110cm/43" **£5.75** PER METRE



ALL IS SAFELY GATHERED IN

Beautifully made woven striped cotton fabrics, all pretty substantial without being heavy.

a: Big Cream Stripe b: Brown Stripe

c: Small Beige Stripe

WIDTH: 140cm/55" **£8.50** PER METRE



A BETTER PLACE

Beautifully made cotton canvas fabric perfect for bags, cushions & blinds.

a: Chelsea b: Coral Island

c: St. Lucia d: Cork e: Cat Island

WIDTH: 150cm/59"

£15.00 PER METRE

THIS SEASON'S

CROFT MILL

Once they're gone...
they're gone!

trouser



SMOOTHIE - DARK TAUPE



DREAD NAUGHT



ARRANGE



NOT THE ONLY FRUIT



MOLESKIN BEIGE



MIXED TROUSERS



PIXIE

SMOOTHIE – DARK TAUPE

Soft, fine, very smooth, Portuguese suiting made from polyester and viscose. It is very soft and feels like an exquisite brushed cotton, has a nice warm hand and is a relatively easy care cloth. It comes in a very fine marled mix of brown and beige yarns 50/50 poly/ viscose.

REF: 6406A WIDTH: 150cm/59" £7.00 PER METRE

DREAD NAUGHT

A smart cloth, in 73% polyester, 21% viscose, 6% elastane, it is a lightweight, suiting in two colour ways. It is virtually creaseless, easy care and has a soft finish. What else do you need in a trouser fabric?

a: Navy b: Black
REF: 1807BN02 WIDTH: 145cm/57" £7.00 per metr

PIXIE

Gorgeous 60% tencel, 37% cotton, 3 % lycra, fine twill trousering in a delicate pink.

REF: 1807P18 WIDTH: 150cm/59" £7.50 PER METRE

ARRANGE

Lightweight polyester suiting fabric. It has a nice soft hand and is an easy care fabric. Good for dresses, trousers and jackets. Available in:

a: Dark Beige b: Olive c: Light Blue d: Pale Airforce
REF: 1903J10 WIDTH: 150cm/59" £ 6.00 PER METRE

NOT THE ONLY FRUIT

Mildly stretchy woven polyester elastane trousering in sort of henna or soft white – ideal for holding it all together, or not, if that's how you fancy it – a good looking heavy suiting.

a: White b: Henna Orange
REF: 1904J13 WIDTH: 150cm/59" £6.00 PER METRE

MOLESKIN – BEIGE

Wonderfully soft and like to velvet touch gorgeous Beige moleskin fabric. Very limited stocks.

REF:1907J12 WIDTH: 150cm/59" £8.00 PER METRE

CROSS HATCH

150cm wide polyester, linen look suiting fabrics. There is a lot of weave interest in this cloth and it is not a flat cloth by any stretch of the imagination. It hangs really well and the texture is intended to give it a natural appearance however, being made of polyester it is easy care and virtually non-iron.

a: Grey b: Denim c: Navy d: Coral
REF: 2045 APPROX WIDTH: 150cm/59" £5.75 PER METRE

STRETCH TROUSERINGS (LEFT TO RIGHT)

CHEEK TO CHEEK

I don't know if any of you have ever had the absolute joy of cuddling up to your child cheek to cheek, item saying "I love you"? Well, the feel of that skin on skin is just wonderful as is, the touch of this, absolutely shinning, navy 97% cotton trousering fabric is just that, you will not find much better than this fabric. The 3% elastane isn't for everyone but it is the modern way & great help for getting rid of brassy knees! German made, from the best house manufacturer.

REF: 2001M10 WIDTH: 150cm/59" £12.00 PER METRE

FOUR- FAVOURITE

A lightweight 98% Cotton 2% Elastane suiting fabric. This fabric has great recovery, has a lovely soft finish and comes in a damson wine colour.

A great fabric for structured straight skirt, jackets and trousers. Flattering for many skin-tones and an all round 'good egg'.

REF: 1910S05 WIDTH: 140cm/55" £6.00 PER METRE

HEART OF STONE

Beautifully made 98% cotton sateen trousering with a little stretch (2% Elastane: hot help with baggy knees.

REF: 1806E21 WIDTH: 150cm/59" £6.00 PER METRE

BLACK TROUSERS

Jet black cotton twill trousering. It has the added benefit of lovely 2% elastane so it stretches. Good quality cloth.

REF:1905M30* WIDTH: 150cm/59" £8.50 PER METRE

MIXED TROUSERINGS (LEFT TO RIGHT)

DRIZZLE

You know the sort of stuff – that appears to get you more wet than big drops of rain, it seems to get in to more places and gets through more layers – this Cotton Shirting/ Lightweight trousering is a small fine white on grey check cloth, which wouldn't stop the drizzle though.

REF: 1809J10 WIDTH:150cm/59" £6.00 PER METRE

CUNARD

Cotton trousering in fine very dark navy, plain weave with a slight satinised finish to one side.

REF:1809J05 WIDTH:150cm/59" £6.00 PER METRE

OUT & ABOUT

Cotton trousering fabric in dark olive green. Wonderful fabric, with enough stretch for jacket or pants.

REF: 1810J43 WIDTH: 158cm/62" £7.00 PER METRE

I AM WIDER

Very wide, fine plain weave trousering fabric in either:

a: Red b: Yellow
REF: 2001E05 WIDTH 180cm/70" £ 8.50 PER METRE

NAVY TRIO – CHINO

Now, this might be what you're looking for, a soft twill navy chino fabric? You can't go wrong with this one, it is lightweight & soft and a perfect weight for a structured shirt, dress & trousers too.

REF: 1907C04 WIDTH: 150cm/59" £7.00 PER METRE

GURTEEN – STONE

156cm wide. Lightweight cotton canvas in a stone beige, salt of the earth stuff.

REF: 2034G WIDTH: 156cm/61" £ 6.00 PER METRE

Primet Business Centre, Burnley Road,
Colne, Lancashire BB8 8DQ

CROFT MILL



FRENCH TERRY

We now stock over 20 colours of French Terry jersey (a mid-weight loop backed jersey). It is OEKOTex® standard 100 which means that it has been rub and dye tested to this high standard and is superb quality. Made from 95% Cotton and 5% Elastane it has good stretch and recovery and is 290g sq/m 10oz sq/m, but in real terms, it is a great jersey material for jumpers, sweatshirts, joggers, dresses and leggings.

REF: 1909H01* WIDTH 152 cm/60"

£10.75 PER METRE

a: Dark Grey

bb: Mint

cd: Turquoise

f: Baby Pink

gg: White

m: Wedgewood

p: The New Black

s: New Cream

x: Midnight Blue

aa: Lavender

c: Aqua

dd: Pale Blue

ff: Berry

h: Yellow

n: Ashes

q: The New Purple

t: French Navy

y: Fawn

b: Silver

cc: Rose

e: Navy

g: Red

j: Moss

o: The New Teal

r: Mustard

w: Airforce

z: Soft Beig



SOFT SHELL

A practical fabric for kids and for adults it's great for walking, the outdoors and everyday wear. They have a water-resistant windproof face with a fleece backing. And, just to make them even better they just simply go in the washing machine on a 30° wash.

WIDTH 140cm/55"

REF PLAINS: 2001N02 £15.00 PER METRE

REF PRINTS: 1811H11 £18.00 PER METRE



BATIK

Gorgeous hand-dyed and hand-printed beautiful batik designs in beautiful designs all on a lovely quality cotton poplin fabric suitable for skirts, dresses, kaftans and especially popular for handicrafts.

REF: 200205 A -K WIDTH 112cm/44" **£9.25 PER METRE**

over 2000 fabrics

www.croftmill.co.uk | [croftmillfabric](https://www.instagram.com/croftmillfabric) | [facebook/Croft-Mill-Fabric](https://www.facebook.com/Croft-Mill-Fabric)